



[Go to Product page](#)

Datasheet for ABIN1450135
anti-YPEL1 antibody (N-Term)

2 Images

Overview

Quantity:	0.1 mg
Target:	YPEL1
Binding Specificity:	N-Term
Reactivity:	Human, Mouse, Rat
Host:	Rabbit
Clonality:	Polyclonal
Conjugate:	This YPEL1 antibody is un-conjugated
Application:	Western Blotting (WB), Immunofluorescence (IF), Enzyme Immunoassay (EIA)

Product Details

Immunogen:	11 amino acid synthetic peptide near the amino terminus of Human YPEL1
Isotype:	IgG
Cross-Reactivity (Details):	Species reactivity (tested):Human, Mouse, Rat.
Purification:	Affinity chromatography purified via peptide column

Target Details

Target:	YPEL1
Alternative Name:	YPEL1 (YPEL1 Products)
Background:	YPEL1 (yippee-like 1) is thought to play a role in the epitheloid conversion of fibroblasts and the regulation of the cellular morphology. It is a 119 amino acid protein that localizes to the nucleus

Target Details

and belongs to a family of yippee-like proteins that include YPEL2 - 5, all of which localize to the centrosome and nucleus and are widely expressed in both adult and fetal tissue. The family of human YPEL proteins share a high degree of sequence homology with their rodent homologs, suggesting a conserved function between species. YPEL1 might be an important factor during the development and malignant transformation of tissues. Synonyms: FKSG3, yippee-like 1

Gene ID: 29799

NCBI Accession: [NP_037445](#)

Application Details

Application Notes: Optimal working dilution should be determined by the investigator.

Restrictions: For Research Use only

Handling

Concentration: 1.0 mg/mL

Buffer: PBS containing 0.02 % Sodium Azide as preservative

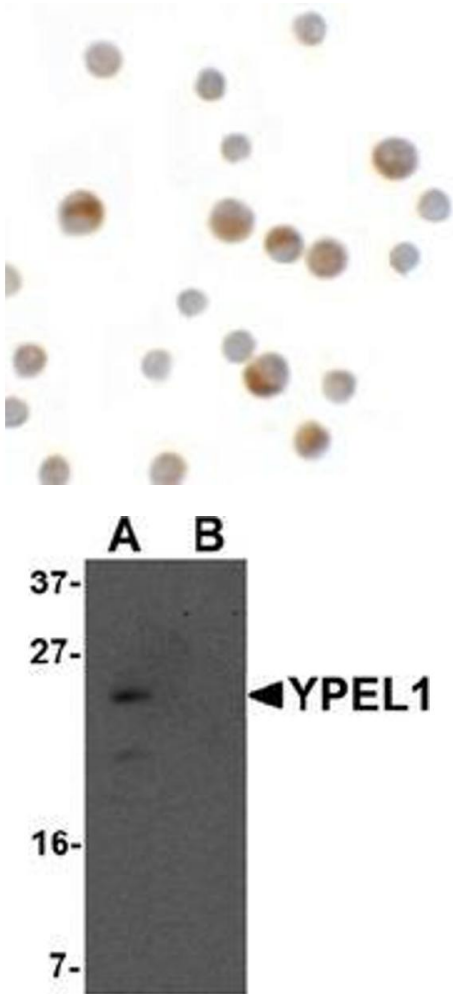
Preservative: Sodium azide

Precaution of Use: This product contains sodium azide: a POISONOUS AND HAZARDOUS SUBSTANCE which should be handled by trained staff only.

Handling Advice: Avoid repeated freezing and thawing.

Storage: 4 °C/-20 °C

Storage Comment: Store undiluted at 2-8 °C for one month or (in aliquots) at -20 °C for longer.



Immunofluorescence

Image 1. Immunocytochemistry of YPEL1 in HeLa cells with YPEL1 antibody at 2.5 µg/mL.

Western Blotting

Image 2. Western blot analysis of YPEL1 in HeLa cell lysate with YPEL1 antibody at 1 µg/mL in (A) the absence and (B) the presence of blocking peptide.