



[Go to Product page](#)

Datasheet for ABIN1450136
anti-YPEL2 antibody (N-Term)

2 Images

Overview

Quantity:	0.1 mg
Target:	YPEL2
Binding Specificity:	N-Term
Reactivity:	Human, Mouse
Host:	Rabbit
Clonality:	Polyclonal
Conjugate:	This YPEL2 antibody is un-conjugated
Application:	Western Blotting (WB), Immunofluorescence (IF), Enzyme Immunoassay (EIA)

Product Details

Immunogen:	17 amino acid synthetic peptide near the amino terminus of Human YPEL2
Isotype:	IgG
Cross-Reactivity (Details):	Species reactivity (tested):Human, Mouse.
Purification:	Affinity chromatography purified via peptide column

Target Details

Target:	YPEL2
Alternative Name:	YPEL2 (YPEL2 Products)
Background:	YPEL2 (yippee-like 2) belongs to a family of five yippee-like proteins, all of which localize to the centrosome or mitotic spindle and are widely expressed in both adult and fetal tissue. This

Target Details

localization plus the fact that the family of human YPEL proteins share a high degree of sequence homology across species suggests that these proteins may have a conserved function involved in cell division. YPEL2 might be an important factor during the development and malignant transformation of tissues, most notably pancreatic and breast tumors. Synonyms: FKSG4, Yippee-like 2

Gene ID: 388403

Application Details

Application Notes: Optimal working dilution should be determined by the investigator.

Restrictions: For Research Use only

Handling

Concentration: 1.0 mg/mL

Buffer: PBS containing 0.02 % Sodium Azide as preservative

Preservative: Sodium azide

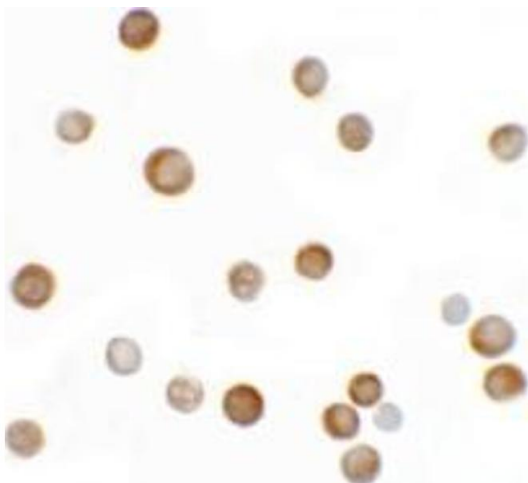
Precaution of Use: This product contains sodium azide: a POISONOUS AND HAZARDOUS SUBSTANCE which should be handled by trained staff only.

Handling Advice: Avoid repeated freezing and thawing.

Storage: 4 °C/-20 °C

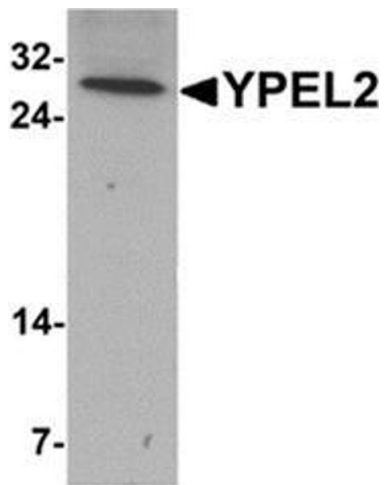
Storage Comment: Store undiluted at 2-8 °C for one month or (in aliquots) at -20 °C for longer.

Images



Immunofluorescence

Image 1. Immunocytochemistry of YPEL2 in HeLa cells with YPEL2 antibody at 2.5 ug/mL.



Western Blotting

Image 2. Western blot analysis of YPEL2 in HeLa cell lysate with YPEL2 antibody at 1 ug/mL.