



[Go to Product page](#)

Datasheet for ABIN1450138  
**anti-YPEL5 antibody (N-Term)**

2 Images

Overview

Quantity:	0.1 mg
Target:	YPEL5
Binding Specificity:	N-Term
Reactivity:	Human, Mouse
Host:	Rabbit
Clonality:	Polyclonal
Conjugate:	This YPEL5 antibody is un-conjugated
Application:	Western Blotting (WB), Enzyme Immunoassay (EIA), Immunofluorescence (IF)

Product Details

Immunogen:	14 amino acid synthetic peptide near the amino terminus of Human YPEL5
Isotype:	IgG
Purification:	Affinity chromatography purified via peptide column

Target Details

Target:	YPEL5
Alternative Name:	YPEL5 ( <a href="#">YPEL5 Products</a> )
Background:	YPEL5 (yippee-like 5) belongs to a family of five yippee-like proteins, all of which localize to the centrosome or mitotic spindle and are widely expressed in both adult and fetal tissue. This localization plus the fact that the family of human YPEL proteins share a high degree of sequence homology across species suggests that these proteins may have a conserved

## Target Details

---

function involved in cell division. YPEL5 is expressed at the nucleus and centrosome during interphase, during mitosis, it localizes to the spindle poles, mitotic spindle, and spindle midzone during mitosis. Finally, during cytokinesis, YPEL5 is localized to the midbody. It is associated with the Ran Binding Protein in the Microtubule organizing center (RanBPM) and a related protein RanBP10. Synonyms: CGI-127, Protein yippee-like 5

Gene ID: 51646

NCBI Accession: [NP\\_057145](#)

## Application Details

---

Application Notes: Optimal working dilution should be determined by the investigator.

Restrictions: For Research Use only

## Handling

---

Concentration: 1.0 mg/mL

Buffer: PBS containing 0.02 % Sodium Azide as preservative

Preservative: Sodium azide

Precaution of Use: This product contains sodium azide: a POISONOUS AND HAZARDOUS SUBSTANCE which should be handled by trained staff only.

Handling Advice: Avoid repeated freezing and thawing.

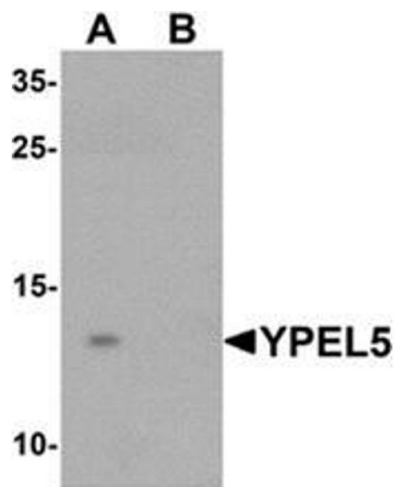
Storage: 4 °C/-20 °C

Storage Comment: Store undiluted at 2-8 °C for one month or (in aliquots) at -20 °C for longer.



### Immunofluorescence

**Image 1.** Immunocytochemistry of YPEL5 in A20 cells with YPEL5 antibody at 2.5 ug/mL.



### Western Blotting

**Image 2.** Western blot analysis of YPEL5 in A-20 cell lysate with YPEL5 Antibody at 1 ug/mL in (A) the absence and (B) the presence of blocking peptide.