

Datasheet for ABIN1450140  
**anti-TMEM106B antibody (N-Term)**[Go to Product page](#)

## 2 Images

## Overview

Quantity:	0.1 mg
Target:	TMEM106B
Binding Specificity:	N-Term
Reactivity:	Human
Host:	Rabbit
Clonality:	Polyclonal
Conjugate:	This TMEM106B antibody is un-conjugated
Application:	Western Blotting (WB), Immunohistochemistry (Paraffin-embedded Sections) (IHC (p)), Immunofluorescence (IF), Enzyme Immunoassay (EIA)

## Product Details

Immunogen:	15 amino acid synthetic peptide near the amino terminus of Human TMEM106B
Isotype:	IgG
Cross-Reactivity (Details):	Species reactivity (tested):Human.
Purification:	Affinity chromatography purified via peptide column

## Target Details

Target:	TMEM106B
Alternative Name:	TMEM106B ( <a href="#">TMEM106B Products</a> )
Background:	Transmembrane protein 106B (TMEM106B) is a single-pass transmembrane protein that is

## Target Details

thought to be a novel risk factor for frontotemporal lobar degeneration (FTLD), a group of clinically, pathologically and genetically heterogeneous disorders associated with atrophy in the frontal lobe and temporal lobe of the brain. The actual role of TMEM106B, and that of the closely related protein TMEM106A are still undetermined. Synonyms: Transmembrane protein 106B

Gene ID: 54664

NCBI Accession: [NP\\_060844](#)

## Application Details

Application Notes: Optimal working dilution should be determined by the investigator.

Restrictions: For Research Use only

## Handling

Concentration: 1.0 mg/mL

Buffer: PBS containing 0.02 % Sodium Azide as preservative

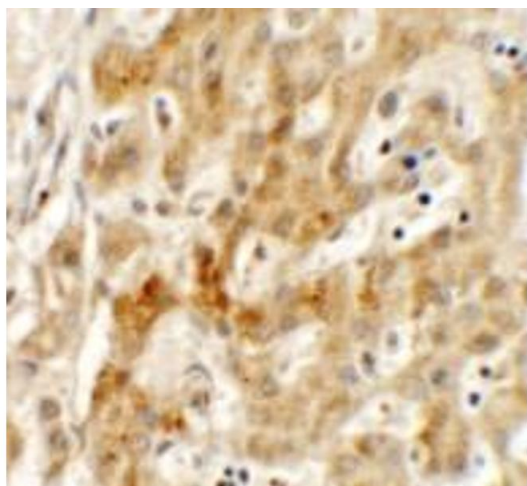
Preservative: Sodium azide

Precaution of Use: This product contains sodium azide: a POISONOUS AND HAZARDOUS SUBSTANCE which should be handled by trained staff only.

Handling Advice: Avoid repeated freezing and thawing.

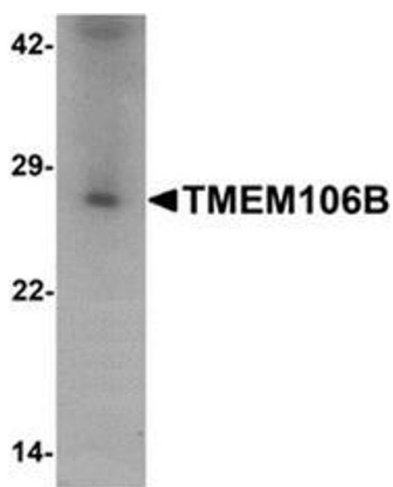
Storage: 4 °C/-20 °C

Storage Comment: Store undiluted at 2-8 °C for one month or (in aliquots) at -20 °C for longer.



#### Immunohistochemistry (Paraffin-embedded Sections)

**Image 1.** Immunohistochemistry of TMEM106B in human liver tissue with TMEM106B antibody at 2.5 ug/mL.



#### Western Blotting

**Image 2.** Western blot analysis of TMEM106B in human liver tissue lysate with TMEM106B antibody at 1 ug/mL.