

Datasheet for ABIN1450144
anti-RILP antibody (Middle Region)[Go to Product page](#)

2 Images

Overview

Quantity:	0.1 mg
Target:	RILP
Binding Specificity:	Middle Region
Reactivity:	Human, Mouse
Host:	Rabbit
Clonality:	Polyclonal
Conjugate:	This RILP antibody is un-conjugated
Application:	Western Blotting (WB), Immunofluorescence (IF), Enzyme Immunoassay (EIA)

Product Details

Immunogen:	18 amino acid synthetic peptide near the center of Human RILP
Isotype:	IgG
Cross-Reactivity (Details):	Species reactivity (tested): Human, Mouse.
Purification:	Affinity chromatography purified via peptide column

Target Details

Target:	RILP
Alternative Name:	RILP (RILP Products)
Background:	The Rab interacting lysosomal protein (RILP) is lysosomal protein that interacts with RAB7, a small GTPase that controls transport to endocytic degradative compartments. It is thought that

Target Details

RILP is a downstream effector of RAB7 and both proteins act together in the regulation of late endocytic traffic. Overexpression of RILP caused enlarged lysosomes that are more centrally located in the cell suggesting that RILP may also be involved in the regulation of lysosomal morphology . Other evidence suggests that RILP may play a role in the biogenesis of multivesicular bodies.Synonyms: PP10141, Rab-interacting lysosomal protein

Gene ID: 83547

NCBI Accession: [NP_113618](#)

Application Details

Application Notes: Optimal working dilution should be determined by the investigator.

Restrictions: For Research Use only

Handling

Concentration: 1.0 mg/mL

Buffer: PBS containing 0.02 % Sodium Azide as preservative

Preservative: Sodium azide

Precaution of Use: This product contains sodium azide: a POISONOUS AND HAZARDOUS SUBSTANCE which should be handled by trained staff only.

Handling Advice: Avoid repeated freezing and thawing.

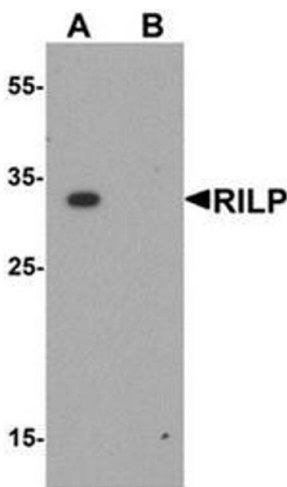
Storage: 4 °C/-20 °C

Storage Comment: Store undiluted at 2-8 °C for one month or (in aliquots) at -20 °C for longer.



Immunofluorescence

Image 1. Immunocytochemistry of RILP in HeLa cells with RILP antibody at 2.5 ug/mL.



Western Blotting

Image 2. Western blot analysis of RILP in A20 cell lysate with RILP antibody at 1 ug/mL.