

Datasheet for ABIN1450146  
**anti-RILPL2 antibody (Middle Region)**[Go to Product page](#)

## 2 Images

## Overview

Quantity:	0.1 mg
Target:	RILPL2
Binding Specificity:	Middle Region
Reactivity:	Human
Host:	Rabbit
Clonality:	Polyclonal
Conjugate:	This RILPL2 antibody is un-conjugated
Application:	Western Blotting (WB), Immunohistochemistry (Paraffin-embedded Sections) (IHC (p)), Immunofluorescence (IF), Enzyme Immunoassay (EIA)

## Product Details

Immunogen:	16 amino acid synthetic peptide near the center of Human RLP2
Isotype:	IgG
Cross-Reactivity (Details):	Species reactivity (tested):Human.
Purification:	Affinity chromatography purified via peptide column

## Target Details

Target:	RILPL2
Alternative Name:	RILPL2 ( <a href="#">RILPL2 Products</a> )
Background:	The Rab interacting lysosomal protein-like 2 (RLP2) protein is related to the is lysosomal protein

## Target Details

RILP which interacts with RAB7, a small GTPase that controls transport to endocytic degradative compartments. Little is known of the exact function of RLP2, but it is thought that RILP is a downstream effector of RAB7 and both proteins act together in the regulation of late endocytic traffic, suggesting that RLP2 may be involved in endocytic traffic with RILP or play a similar role. RILP and possible RLP2 may also play a role in the biogenesis of multivesicular bodies. Synonyms: RILP-like protein 2, RLP2, Rab-interacting lysosomal protein-like 2, p40phox-binding protein

Gene ID: 196383

NCBI Accession: [NP\\_659495](#)

## Application Details

Application Notes: Optimal working dilution should be determined by the investigator.

Restrictions: For Research Use only

## Handling

Concentration: 1.0 mg/mL

Buffer: PBS containing 0.02 % Sodium Azide as preservative

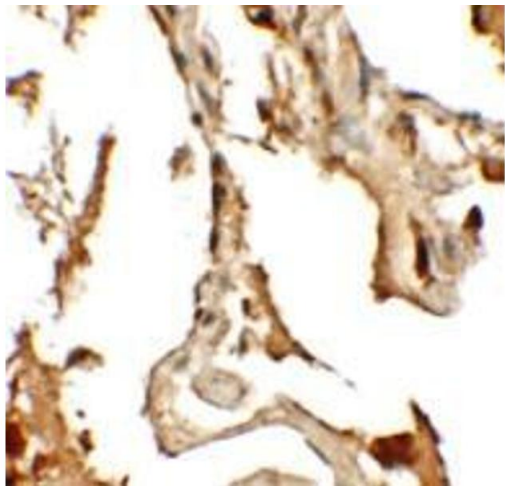
Preservative: Sodium azide

Precaution of Use: This product contains sodium azide: a POISONOUS AND HAZARDOUS SUBSTANCE which should be handled by trained staff only.

Handling Advice: Avoid repeated freezing and thawing.

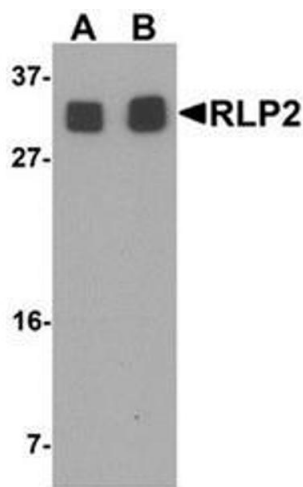
Storage: 4 °C/-20 °C

Storage Comment: Store undiluted at 2-8 °C for one month or (in aliquots) at -20 °C for longer.



**Immunohistochemistry (Paraffin-embedded Sections)**

**Image 1.** Immunohistochemistry of RLP2 in human lung tissue with RLP2 antibody at 2.5 ug/mL.



**Western Blotting**

**Image 2.** Western blot analysis of RLP2 in A549 cell lysate with RLP2 antibody at (A) 1 and (B) 2 ug/mL.