

Datasheet for ABIN1450148
anti-TFCP2L1 antibody (N-Term)

2 Images

[Go to Product page](#)

Overview

Quantity:	0.1 mg
Target:	TFCP2L1
Binding Specificity:	N-Term
Reactivity:	Human, Mouse, Rat
Host:	Rabbit
Clonality:	Polyclonal
Conjugate:	This TFCP2L1 antibody is un-conjugated
Application:	Western Blotting (WB), Immunohistochemistry (Paraffin-embedded Sections) (IHC (p)), Immunofluorescence (IF), Enzyme Immunoassay (EIA)

Product Details

Immunogen:	15 amino acid synthetic peptide near the amino terminus of Human TFCP2L1
Isotype:	IgG
Cross-Reactivity (Details):	Species reactivity (tested): Human, Mouse, Rat.
Purification:	Affinity chromatography purified via peptide column

Target Details

Target:	TFCP2L1
Alternative Name:	TFCP2L1 (TFCP2L1 Products)
Background:	The Transcription factor CP2-like protein 1 (TFCP2L1) is related to the ubiquitously expressed

Target Details

CP2 family of transcription factors that are generally transcription factors. TFCP2L1 is expressed in a developmentally regulated fashion during embryogenesis and in the epithelial lining of distal convoluted tubules in embryonic and adult kidneys . Recent studies have shown that TFCP2L1 is part of an Oct4-centered protein interaction network in embryonic stem cells. It is thought to modulate the activity of other CP2 family members in a cell specific manner, and is itself regulated by sumoylation at a single major site.Synonyms: CP2-related transcriptional repressor 1, CRTR-1, CRTR1, LBP-9, LBP9, Transcription factor CP2-like protein 1

Gene ID: 29842

NCBI Accession: [NP_055368](#)

Application Details

Application Notes: Optimal working dilution should be determined by the investigator.

Restrictions: For Research Use only

Handling

Concentration: 1.0 mg/mL

Buffer: PBS containing 0.02 % Sodium Azide as preservative

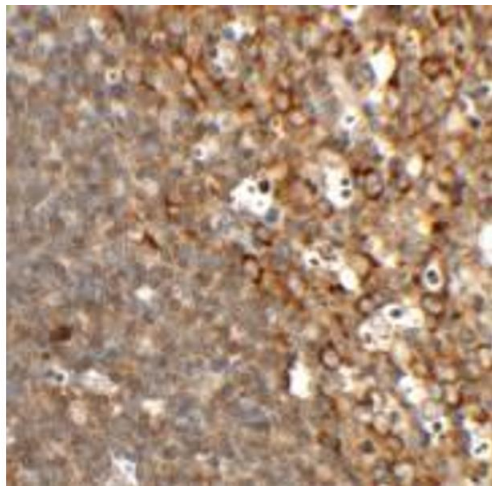
Preservative: Sodium azide

Precaution of Use: This product contains sodium azide: a POISONOUS AND HAZARDOUS SUBSTANCE which should be handled by trained staff only.

Handling Advice: Avoid repeated freezing and thawing.

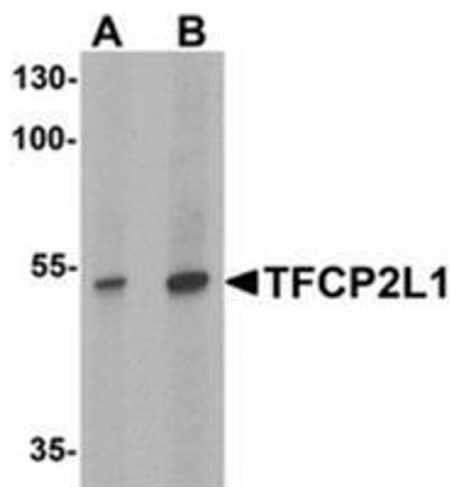
Storage: 4 °C/-20 °C

Storage Comment: Store undiluted at 2-8 °C for one month or (in aliquots) at -20 °C for longer.



Immunohistochemistry (Paraffin-embedded Sections)

Image 1. Immunohistochemistry of TFCP2L1 in rat colon tissue with TFCP2L1 antibody at 2.5 ug/mL.



Western Blotting

Image 2. Western blot analysis of TFCP2L1 in human colon tissue lysate with TFCP2L1 antibody at (A) 1 and (B) 2 ug/mL