

Datasheet for ABIN1450168

anti-FOXD4L1 antibody (C-Term)[Go to Product page](#)**1** Image

Overview

Quantity:	0.1 mg
Target:	FOXD4L1
Binding Specificity:	C-Term
Reactivity:	Human, Mouse
Host:	Rabbit
Clonality:	Polyclonal
Conjugate:	This FOXD4L1 antibody is un-conjugated
Application:	Western Blotting (WB), Enzyme Immunoassay (EIA)

Product Details

Immunogen:	18 amino acid synthetic peptide near the carboxy terminus of Human FOXD4L1
Isotype:	IgG
Purification:	Affinity chromatography purified via peptide column

Target Details

Target:	FOXD4L1
Alternative Name:	FOXD4-Like 1 (FOXD4L1 Products)
Background:	FOXD4L1, also known as FOXD5, is a member of the forkhead/winged-helix (FOX) family of transcription factors with highly conserved FOX DNA-binding domains. Members of the FOX family of transcription factors are regulators of embryogenesis and is thought to play a role in human cancer. FOXD4L1 is a forkhead transcription factor that functions as both a

Target Details

	transcriptional activator and repressor and acts upstream of several other neural transcription factors to maintain neural fate, regulate neural plate patterning, and delay the expression of neural differentiation factors.Synonyms: FOXD4L1, Forkhead box protein D4-like 1
Gene ID:	200350
NCBI Accession:	NP_036316

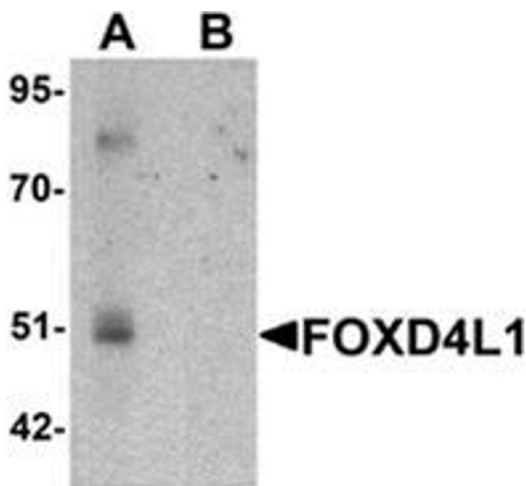
Application Details

Application Notes:	Optimal working dilution should be determined by the investigator.
Restrictions:	For Research Use only

Handling

Concentration:	1.0 mg/mL
Buffer:	PBS containing 0.02 % Sodium Azide as preservative
Preservative:	Sodium azide
Precaution of Use:	This product contains sodium azide: a POISONOUS AND HAZARDOUS SUBSTANCE which should be handled by trained staff only.
Handling Advice:	Avoid repeated freezing and thawing.
Storage:	-20 °C
Storage Comment:	Store the antibody (in aliquots) at -20 °C.

Images



Western Blotting

Image 1. Western blot analysis of FOXD4L1 in A-20 cell lysate with FOXD4L1 Antibody at 1 µg/mL in (A) the absence and (B) the presence of blocking peptide.