

Datasheet for ABIN1450224

anti-GFRA1 antibody**2** Images[Go to Product page](#)

Overview

Quantity:	100 µg
Target:	GFRA1
Reactivity:	Human
Host:	Chicken
Clonality:	Polyclonal
Conjugate:	This GFRA1 antibody is un-conjugated
Application:	Western Blotting (WB), ELISA, Immunofluorescence (IF)

Product Details

Isotype:	IgY
Specificity:	Glial cell line-derived neurotrophic factor (GDNF) andneurturin (NTN) are two structurally related, potent neurotrophic factors thatplay key roles in the control of neuron survival and differentiation. The GFRa-1is a member of the GDNF receptor family. It is a glycosylphosphatidylinositol(GPI)-linked cell surface receptor for both GDNF and NTN, and mediatesactivation of the RET tyrosine kinase receptor (www.ncbi.nlm.nih.gov/gene/2674)
Characteristics:	Mono- and polyclonal antibodies to human growth factors and neural growth factor receptors.
Purification:	GFRa-1 affinity purified

Target Details

Target:	GFRA1
Alternative Name:	GFRa-1 (GFRA1 Products)

Target Details

Background: Recombinant His-tagged human GFR α -1 protein produced using CHO-based cell line. For production of hGFR α -1, glycosylphosphatidylinositol GPI-anchor was removed and protein was secreted to the cell culture supernatant. Protein was purified by Ni-affinity chromatography following gel-filtration from cell culture supernatant

UniProt: [P56159](#)

Application Details

Application Notes: Western immunoblotting, recommended dilution 1:5 000 to 1:10 000, ELISA: 1:80 000 to 160 000, IF 1:1000 to 1:2000. Polyclonal antibody working titer has to be established practically for each particular antigen and assay format

Comment: Synonym: RET ligand 1, TGF-beta related neurotrophic factor receptor 1

Restrictions: For Research Use only

Handling

Format: Liquid

Concentration: 1 mg/ml

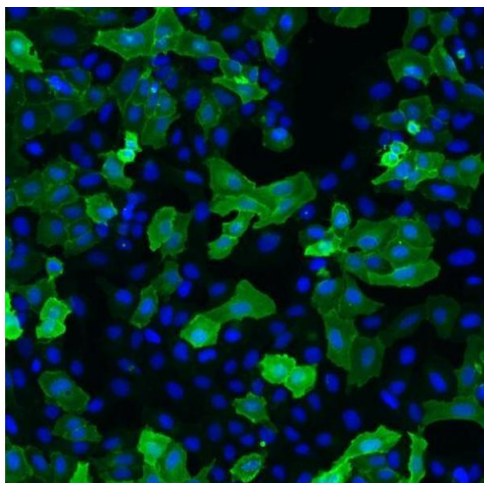
Buffer: Concentrated ammonium sulphate in PBS pH 7.4

Handling Advice: As product is (NH₄)₂SO₄ precipitate, mix well by pipetting or vortexing prior use

Storage: 4 °C

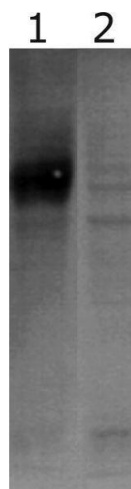
Storage Comment: This product is shipped in non-frozen liquid form in ambient conditions

Images



Immunofluorescence

Image 1. Immunofluorescence detection of human GFR α -1 expressed in U2OS cells. GFR α -1 was visualized using Chicken polyclonal antibody to human GFR α -1 (dilution 1:2000) and Goat anti-chicken IgY - H&L DyLight 550 (Abcam, ab96952) (dilution 1:200) as secondary antibody. For nuclear staining DAPI was used. ArrayScan VTI platform (Thermo Scientific) was used for image acquisition (10x objective). Composite picture was generated using



pseudocolors green for GFR α -1 specific signal and blue for nuclei.

Western Blotting

Image 2. Western-Blot detection of human GFR α -1 expressed in CHO cells. Line 1. hGFR α -1-containing CHOEBNALT85 cell culture supernatant. Line 2. Negative control - CHOEBNALT85 cell culture supernatant. 5 μ l of supernatant were loaded per line. Primary antibody dilution 1:5000 was used. Rb pAb to Chk IgY ab6753, was used as secondary antibody