

Datasheet for ABIN1450226

anti-GFRA3 antibody**2** Images[Go to Product page](#)

Overview

Quantity:	100 µg
Target:	GFRA3
Reactivity:	Human
Host:	Chicken
Clonality:	Polyclonal
Conjugate:	This GFRA3 antibody is un-conjugated
Application:	Western Blotting (WB), ELISA, Immunofluorescence (IF)

Product Details

Isotype:	IgY
Specificity:	The GFRa-3 is aglycosylphosphatidylinositol(GPI)-linked cell surface receptor and a member of the GDNF receptor family. It forms a signaling receptor complex with RET tyrosine kinase receptor and binds the ligand, artemin
Characteristics:	Mono- and polyclonal antibodies to human growth factors and neural growth factor receptors.
Purification:	GFRa-3 affinity purified

Target Details

Target:	GFRA3
Alternative Name:	GFRa-3 (GFRA3 Products)
Background:	Recombinant His-tagged human GFRa-3 protein produced using CHO-based cell line. For production of hGFRa-3, glycosylphosphatidylinositol GPI-anchor was removed and protein was

Target Details

secreted to the cell culture supernatant. Protein was purified by Ni-affinity chromatography following gel-filtration from cell culture supernatant

UniProt: [O60609](#)

Application Details

Application Notes: Western immunoblotting, recommended dilution 1:5 000 to 1:10 000, ELISA: 1:160 000 to 1:320 000, IF 1:1500 to 1:3000. Polyclonal antibody working titer has to be established practically for each particular antigen and assay format

Comment: Synonym: GDNF receptor alpha-3

Restrictions: For Research Use only

Handling

Format: Liquid

Concentration: 1 mg/ml

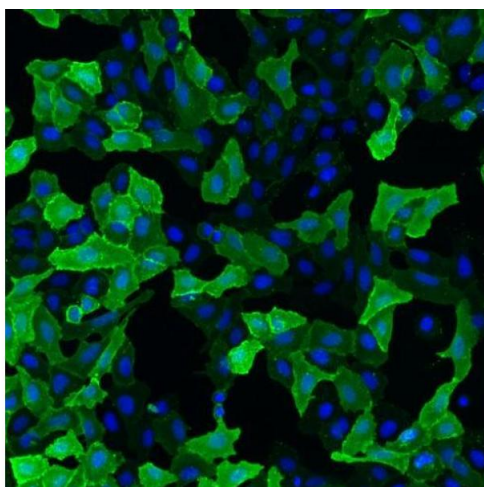
Buffer: Concentrated ammonium sulphate in PBS pH 7.4

Handling Advice: As product is (NH₄)₂SO₄ precipitate, mix well by pipetting or vortexing prior use

Storage: 4 °C

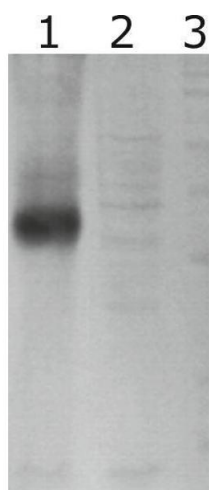
Storage Comment: This product is shipped in non-frozen liquid form in ambient conditions

Images



Immunofluorescence

Image 1. IF detection of human GFR α -3 expressed in U2OS cells. GFR α -3 was visualized using Chicken polyclonal antibody to human GFR α -3 (dilution 1:3000) and Goat anti-chicken IgY - H&L DyLight 550 (Abcam, ab96952) (dilution 1:200) as secondary antibody. For nuclear staining DAPI was used. ArrayScan VTI platform (Thermo Scientific) was used for image acquisition (10x objective). Composite picture was generated using pseudocolors green for GFR α -3 specific signal and blue for nuclei.



Western Blotting

Image 2. Western-Blot detection of human GFR α -3 expressed in CHO cells. Line 1. hGFR α -3-containing CHOEBNALT85 cell culture supernatant. Line 2. Negative control - CHOEBNALT85 cell culture supernatant. 5 μ l of supernatant were loaded per line. Primary antibody dilution 1:5000 was used. Rb pAb to Chk IgY ab6753, was used as secondary antibody