

Datasheet for ABIN1450227

anti-Ret Proto-Oncogene antibody**2** Images[Go to Product page](#)

Overview

Quantity:	100 µg
Target:	Ret Proto-Oncogene (RET)
Reactivity:	Human
Host:	Chicken
Clonality:	Polyclonal
Conjugate:	This Ret Proto-Oncogene antibody is un-conjugated
Application:	Western Blotting (WB), ELISA, Immunofluorescence (IF)

Product Details

Isotype:	IgY
Specificity:	The RET proto-oncogene is a receptor tyrosine kinase for members of the glial cell line-derived neurotrophic factor family of extracellular signalling molecules
Characteristics:	Mono- and polyclonal antibodies to human growth factors and neural growth factor receptors.
Purification:	RET affinity purified

Target Details

Target:	Ret Proto-Oncogene (RET)
Alternative Name:	RET (RET Products)
Background:	Recombinant His-tagged extracellular fragment of human RET protein produced using CHO-based cell line. The extracellular fragment of hRET was expressed and secreted to the cell culture supernatant. Protein was purified by Ni-affinity chromatography following gel-filtration

Target Details

from cell culture supernatant

UniProt: [P07949](#)

Pathways: [RTK Signaling](#), [Dopaminergic Neurogenesis](#), [Regulation of Cell Size](#), [Tube Formation](#)

Application Details

Application Notes: Westernimmunoblotting, recommended dilution 1:5 000 to 1:10 000, ELISA: 1:80 000 to 1:120000, IF 1:250 to 1:500. Polyclonal antibody working titer has to be established practically for each particularantigen and assay format

Comment: Synonym: Proto-oncogene tyrosine-protein kinase receptorRet, Cadherin family member 12, Proto-oncogene c-Ret

Restrictions: For Research Use only

Handling

Format: Liquid

Concentration: 1 mg/ml

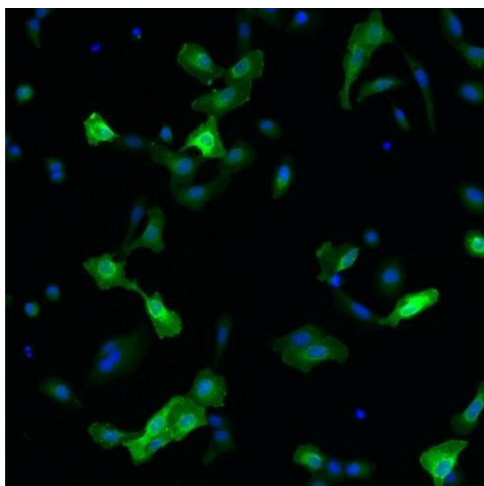
Buffer: Concentrated ammonium sulphate in PBS pH 7.4

Handling Advice: As product is (NH₄)₂SO₄ precipitate, mix well by pipetting or vortexing prior use

Storage: 4 °C

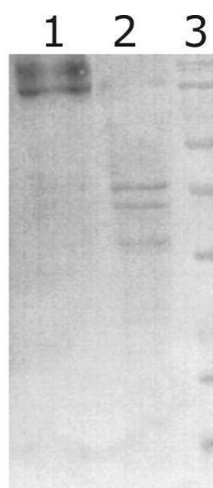
Storage Comment: This product is shipped in non-frozen liquid form in ambient conditions

Images



Immunofluorescence

Image 1. Immunofluorescence detection of human RET expressed in U2OS cells. RET was visualized using Chicken polyclonal antibody to human RET (dilution 1:500) and Goat anti-chicken IgY - H&L DyLight 550 (Abcam, ab96952) (dilution 1:200) as secondary antibody. For nuclear staining DAPI was used. ArrayScan VTI platform (Thermo Scientific) was used for image acquisition (10x objective). Composite picture was generated using pseudocolors green for RET



specific signal and blue for nuclei.

Western Blotting

Image 2. Western-Blot detection of human RET expressed in CHO cells. Line 1. hRET-containing CHOEBNALT85 cell culture supernatant. Line 2. Negative control - CHOEBNALT85 cell culture supernatant. 5 μ l of supernatant were loaded per line. Primary antibody dilution 1:5000 was used. Rb pAb to Chk IgY ab6753, was used as secondary antibody