



[Go to Product page](#)

Datasheet for ABIN1450228
anti-Neurturin antibody

1 Image

Overview

Quantity:	100 µg
Target:	Neurturin (NRTN)
Reactivity:	Human
Host:	Rabbit
Clonality:	Polyclonal
Conjugate:	This Neurturin antibody is un-conjugated
Application:	Western Blotting (WB), ELISA

Product Details

Isotype:	IgG
Specificity:	Neurturin (NTN) is a member of the GDNF family of ligands. GDNF family proteins are distant members of the TGF-beta superfamily
Cross-Reactivity (Details):	Antibody does not give cross-reactivity to other GDNF-family proteins.
Characteristics:	Mono- and polyclonal antibodies to human growth factors and neural growth factor receptors.
Purification:	Rabbit IgG fraction

Target Details

Target:	Neurturin (NRTN)
Alternative Name:	Neurturin (NRTN Products)
Background:	Recombinant human NRTN protein produced using CHO-based cell line. Protein was purified

Target Details

from the cell culture supernatant

UniProt: [Q99748](#)

Application Details

Application Notes: Westernimmunoblotting, recommended dilution 1:500 to 1:1000, ELISA: 1:50 000 to 1:100000. Polyclonal antibody working titer has to be established practically for each particularantigen and assay format

Comment: Synonym: NRTN, NTN

Restrictions: For Research Use only

Handling

Format: Liquid

Concentration: 2,5 mg/ml

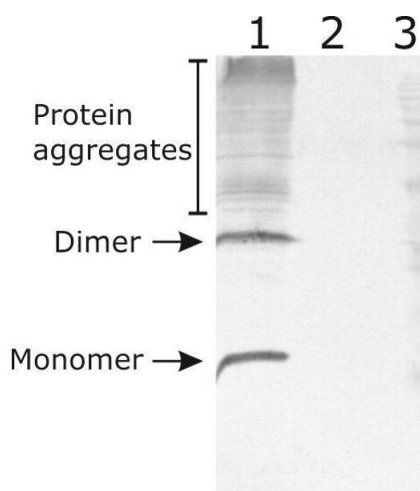
Buffer: Concentrated ammonium sulphate in PBS pH 7.4

Handling Advice: As product is (NH₄)₂SO₄ precipitate, mix well by pipetting or vortexing prior use

Storage: 4 °C

Storage Comment: This product is shipped in non-frozen liquid form in ambient conditions

Images



Western Blotting

Image 1. Western-Blot detection of human NRTN expressed in CHO cells. Line 1. hNRTN-containing CHOEBNALT85 cell culture supernatant. Line 2. Negative control - CHOEBNALT85 cell culture supernatant. 5 µl of supernatant were loaded per line. Primary antibody dilution 1:5000 was used. Rb pAb to Chk IgY ab6753, was used as secondary antibody. Antibody recognizes protein dimeric, and monomeric variants