

Datasheet for ABIN1450235

Rabbit anti-Chicken IgY Antibody (DyLight 549)



[Go to Product page](#)

1 Image

Overview

Quantity:	100 µg
Target:	IgY
Reactivity:	Chicken
Host:	Rabbit
Clonality:	Polyclonal
Conjugate:	DyLight 549
Application:	Immunofluorescence (IF)

Product Details

Isotype:	IgG
Characteristics:	Rabbit-anti chicken polyclonal antibodies, Purified IgY fraction
Purification:	IgG fraction purified by IgY affinity chromatography

Target Details

Target:	IgY
Abstract:	IgY Products
Target Type:	Antibody

Application Details

Application Notes:	IF: 1: 100 - 1:200. Polyclonal antibody working titer has to be established practically for each
--------------------	--

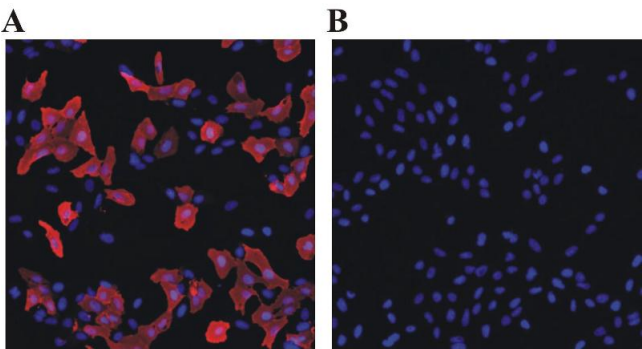
Application Details

	particularantigen and assay format
Restrictions:	For Research Use only

Handling

Format:	Frozen
Concentration:	0.5 mg/mL
Buffer:	PBS pH 7.4, with 50 % glycerol
Handling Advice:	Product is photosensitive and should be protected from light. Divide antibody into aliquots prior usage. Avoid multiple freeze-thaw cycles
Storage:	4 °C/-20 °C

Images



Immunofluorescence

Image 1. Immunofluorescent analysis for testing of Rabbit anti-chicken polyclonal antibody DyLight 549 conjugate as secondary antibody. Chicken polyclonal antibody to human GFR α -3 (305-100 Icosagen), dilution 1:3000 was used as primary antibody. For nuclear staining DAPI was used. A. U2OS cells expressing GFR α -3. B. Non-transfected U2OS cells. ArrayScan VTI platform (Thermo Scientific) was used for image acquisition (10x objective).