

Datasheet for ABIN1458314

## Malate Dehydrogenase (MDH) (AA 2-312) protein (His tag)



[Go to Product page](#)

### 1 Image

#### Overview

Quantity:	1 mg
Target:	Malate Dehydrogenase (MDH)
Protein Characteristics:	AA 2-312
Origin:	Bacillus subtilis
Source:	Yeast
Protein Type:	Recombinant
Purification tag / Conjugate:	His tag
Application:	ELISA

#### Product Details

Sequence:	GNTRKKVSV IGAGFTGATT AFLIAQKELA DVVLVDIPQL ENPTKGKALD MLEASPVQGF DAKITGTSNY EDTAGSDIVV ITAGIARKPG MSRDDLSTN EKIMRSVTQE IVKYSPPDSII VVLTPVDAM TYAVYKESGF PKERVIGQSG VLDTARFRTF VAEELNLSVK DVTGFVLGGH GDDMVPLVRY SYAGGIPIET LIPKERIDAI VERTRKGGGE IVNLLGNGSA YYAPAASLTE MVEAILKDQR RVLPTIAYLE GEYGYEGIYL GVPTIVGGNG LEQIIIELELT DYERAQLNKS VESVKNVMKV LS
Specificity:	Bacillus subtilis (strain 168)
Characteristics:	Please inquire if you are interested in this recombinant protein expressed in E. coli, mammalian cells or by baculovirus infection. Be aware about differences in price and lead time.
Purity:	> 90 %

## Target Details

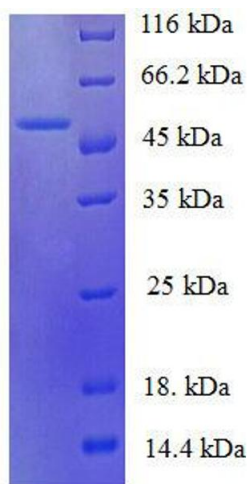
Target:	Malate Dehydrogenase (MDH)
Abstract:	<a href="#">MDH Products</a>
Background:	Recommended name: Malate dehydrogenase. EC= 1.1.1.37. Alternative name(s): Vegetative protein 69. Short name= VEG69
UniProt:	<a href="#">P49814</a>
Pathways:	<a href="#">Regulation of Lipid Metabolism by PPARalpha</a>

## Application Details

Comment:	The yeast protein expression system is the most economical and efficient eukaryotic system for secretion and intracellular expression. A protein expressed by the mammalian cell system is of very high-quality and close to the natural protein. But the low expression level, the high cost of medium and the culture conditions restrict the promotion of mammalian cell expression systems. The yeast protein expression system serve as a eukaryotic system integrate the advantages of the mammalian cell expression system. A protein expressed by yeast system could be modiflicated such as glycosylation, acylation, phosphorylation and so on to ensure the native protein conformation. It can be used to produce protein material with high added value that is very close to the natural protein. Our proteins produced by yeast expression system has been used as raw materials for downstream preparation of monoclonal antibodies.
Restrictions:	For Research Use only

## Handling

Format:	Lyophilized
Concentration:	0.2-2 mg/mL
Buffer:	Tris-based buffer, 50 % glycerol
Handling Advice:	Repeated freezing and thawing is not recommended. Store working aliquots at 4 °C for up to one week
Storage:	-20 °C
Storage Comment:	Store at -20 °C, for extended storage, conserve at -20 °C or -80 °C.



SDS-PAGE

**Image 1.** Malate Dehydrogenase (MDH) (AA 2-312) protein (His tag) expressed in E. coli