

Datasheet for ABIN1474621

PLA2G5 Protein (AA 21-137) (His tag)[Go to Product page](#)**1** Image

Overview

Quantity:	1 mg
Target:	PLA2G5
Protein Characteristics:	AA 21-137
Origin:	Rat
Source:	Yeast
Protein Type:	Recombinant
Purification tag / Conjugate:	This PLA2G5 protein is labelled with His tag.
Application:	ELISA

Product Details

Sequence:	GLLELKSMIE KVTGKNAVKN YGFYGCYCGW GGHGTPKDGT DWCCRMHDRC YGLLEEKHCA IRTQSYDYRF TQDLVICEHD SFCPVRLCAC DRKLVYCLRR NLWSYNRLYQ YYPNFLC
Specificity:	Rattus norvegicus (Rat)
Characteristics:	Please inquire if you are interested in this recombinant protein expressed in E. coli, mammalian cells or by baculovirus infection. Be aware about differences in price and lead time.
Purity:	> 90 %

Target Details

Target:	PLA2G5
Alternative Name:	Calcium-dependent phospholipase A2 (Pla2g5) (PLA2G5 Products)

Target Details

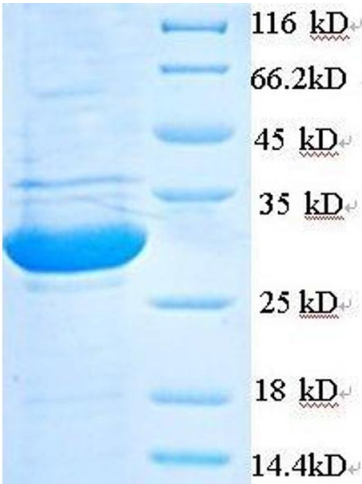
Background:	Recommended name: Calcium-dependent phospholipase A2. EC= 3.1.1.4. Alternative name(s): Group V phospholipase A2 PLA2-10 Phosphatidylcholine 2-acylhydrolase 5
UniProt:	P51433
Pathways:	Inositol Metabolic Process

Application Details

Comment:	The yeast protein expression system is the most economical and efficient eukaryotic system for secretion and intracellular expression. A protein expressed by the mammalian cell system is of very high-quality and close to the natural protein. But the low expression level, the high cost of medium and the culture conditions restrict the promotion of mammalian cell expression systems. The yeast protein expression system serve as a eukaryotic system integrate the advantages of the mammalian cell expression system. A protein expressed by yeast system could be modiflicated such as glycosylation, acylation, phosphorylation and so on to ensure the native protein conformation. It can be used to produce protein material with high added value that is very close to the natural protein. Our proteins produced by yeast expression system has been used as raw materials for downstream preparation of monoclonal antibodies.
Restrictions:	For Research Use only

Handling

Format:	Lyophilized
Concentration:	0.2-2 mg/mL
Buffer:	Tris-based buffer, 50 % glycerol
Handling Advice:	Repeated freezing and thawing is not recommended. Store working aliquots at 4 °C for up to one week
Storage:	-20 °C
Storage Comment:	Store at -20 °C, for extended storage, conserve at -20 °C or -80 °C.



Immunohistochemistry

Image 1. phospholipase A2, Group V (PLA2G5) (AA 21-137) protein (His tag) expressed in E. coli