

Datasheet for ABIN1474694
ITGB1 Protein (AA 21-729) (His tag)



[Go to Product page](#)

1 Image

Overview

Quantity:	1 mg
Target:	ITGB1
Protein Characteristics:	AA 21-729
Origin:	Rat
Source:	Yeast
Protein Type:	Recombinant
Purification tag / Conjugate:	This ITGB1 protein is labelled with His tag.
Application:	ELISA

Product Details

Sequence:	QTDKNRCLKA NAKSCGECIQ AGPNCGWCTN TTFLQEGMPT SARCDLEAL KKKGCHPSDI ENPRGSQTIK KNKNVTNRSK GMAEKLRPED ITQIQPQQLL LKLRSGEPQK FTLKFKRAED YPIDLYYLMD LSYSMKDDLE NVKSLGTDLM NEMRRITSDF RIGFGSFVEK TVMPYISTTP AKLRNPCTSE QNCTSPFSYK NVLSLTDGRG FFNELVGQQR ISGNLDSPEG GFDAIMQVAV CGSLIGWRNV TRLLVFSTDA GFHFAGDGKL GGIVLPNDGQ CHLENNVYTM SHYYDYPSIA HLVQKLENN IQTIFAVTEE FQPVYKELKN LIPKSAVGTL SGNSSNVIQL IIDAYNSLSS EVILENSKLP DGVTINYKSY CKNGVNGTGE NGRKCSNISI GDEVQFEISI TANKCPNKES ENQLKLNPLG FTEEVEVLQ FICKCNCQSH GIPASPKCHE GNGTFECGAC RCNEGRVGRH CECSTDEVNS EDMDAYCRKE NSSEICSNNG ECVCGQCVCR KRENTNEIYS GKFCECDNFN CDRSNGLICG GNGVCRRCRVC ECYPNYTGSA CDCSLDTVPC VATNGQICNG RGICECGACK CTDPKFQGPT CETCQTCLGV CAEHKECVQC RAFNKGEKKD TCAQECSHFN LTKVESREKL PQPQVQDPVT HCKEKDIDDC WFYFTYSVNS KGEAHVHVVE TPDCTGPD
-----------	---

Product Details

Specificity:	Rattus norvegicus (Rat)
Characteristics:	Please inquire if you are interested in this recombinant protein expressed in E. coli, mammalian cells or by baculovirus infection. Be aware about differences in price and lead time.
Purity:	> 90 %

Target Details

Target:	ITGB1
Alternative Name:	Integrin beta-1 (Itgb1) (ITGB1 Products)
Background:	Recommended name: Integrin beta-1. Alternative name(s): Beta oligodendroglia. Short name= Beta OL Fibronectin receptor subunit beta VLA-4 subunit beta CD_antigen= CD29
UniProt:	P49134
Pathways:	Cell-Cell Junction Organization , Regulation of G-Protein Coupled Receptor Protein Signaling , CXCR4-mediated Signaling Events , Signaling of Hepatocyte Growth Factor Receptor , Integrin Complex , SARS-CoV-2 Protein Interactome

Application Details

Comment:	The yeast protein expression system is the most economical and efficient eukaryotic system for secretion and intracellular expression. A protein expressed by the mammalian cell system is of very high-quality and close to the natural protein. But the low expression level, the high cost of medium and the culture conditions restrict the promotion of mammalian cell expression systems. The yeast protein expression system serve as a eukaryotic system integrate the advantages of the mammalian cell expression system. A protein expressed by yeast system could be modified such as glycosylation, acylation, phosphorylation and so on to ensure the native protein conformation. It can be used to produce protein material with high added value that is very close to the natural protein. Our proteins produced by yeast expression system has been used as raw materials for downstream preparation of monoclonal antibodies.
----------	--

Restrictions:	For Research Use only
---------------	-----------------------

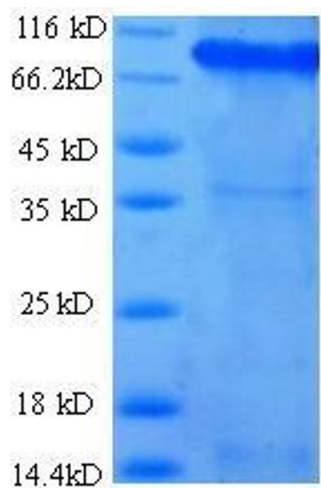
Handling

Format:	Lyophilized
Concentration:	0.2-2 mg/mL

Handling

Buffer:	Tris-based buffer, 50 % glycerol
Handling Advice:	Repeated freezing and thawing is not recommended. Store working aliquots at 4 °C for up to one week
Storage:	-20 °C
Storage Comment:	Store at -20 °C, for extended storage, conserve at -20 °C or -80 °C.

Images



SDS-PAGE

Image 1. Integrin beta 1 (ITGB1) (AA 21-729) protein (His tag) expressed in E. coli