

Datasheet for ABIN1476824
GHRH Protein (AA 1-44) (His tag)[Go to Product page](#)

1 Image

Overview

Quantity:	1 mg
Target:	GHRH
Protein Characteristics:	AA 1-44
Origin:	Sheep
Source:	Yeast
Protein Type:	Recombinant
Purification tag / Conjugate:	This GHRH protein is labelled with His tag.
Application:	ELISA

Product Details

Sequence:	YADAIFTNSY RKILGQLSAR KLLQDIMNRQ QGERNQEQGA KVRL
Specificity:	Ovis aries (Sheep)
Characteristics:	Please inquire if you are interested in this recombinant protein expressed in E. coli, mammalian cells or by baculovirus infection. Be aware about differences in price and lead time.
Purity:	> 90 %

Target Details

Target:	GHRH
Alternative Name:	Somatoliberin (GHRH) (GHRH Products)
Background:	Recommended name: Somatoliberin.

Target Details

Alternative name(s): Growth hormone-releasing factor.
Short name= GRF Growth hormone-releasing hormone.
Short name= GHRH

UniProt: [P07217](#)

Pathways: [Hormone Transport](#), [Hormone Activity](#), [cAMP Metabolic Process](#)

Application Details

Comment: The yeast protein expression system is the most economical and efficient eukaryotic system for secretion and intracellular expression. A protein expressed by the mammalian cell system is of very high-quality and close to the natural protein. But the low expression level, the high cost of medium and the culture conditions restrict the promotion of mammalian cell expression systems. The yeast protein expression system serve as a eukaryotic system integrate the advantages of the mammalian cell expression system. A protein expressed by yeast system could be modiflicated such as glycosylation, acylation, phosphorylation and so on to ensure the native protein conformation. It can be used to produce protein material with high added value that is very close to the natural protein. Our proteins produced by yeast expression system has been used as raw materials for downstream preparation of monoclonal antibodies.

Restrictions: For Research Use only

Handling

Format: Lyophilized

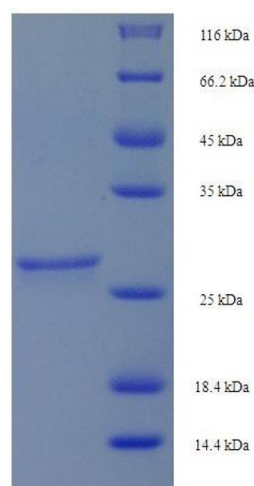
Concentration: 0.2-2 mg/mL

Buffer: Tris-based buffer, 50 % glycerol

Handling Advice: Repeated freezing and thawing is not recommended. Store working aliquots at 4 °C for up to one week

Storage: -20 °C

Storage Comment: Store at -20 °C, for extended storage, conserve at -20 °C or -80 °C.



SDS-PAGE

Image 1. Protein expressed in E.coli.