

Datasheet for ABIN1490536

anti-ALDH1A3 antibody (AA 1-100, AA 413-512)



[Go to Product page](#)

5 Images

Overview

Quantity:	100 µL
Target:	ALDH1A3
Binding Specificity:	AA 1-100, AA 413-512
Reactivity:	Human
Host:	Mouse
Clonality:	Monoclonal
Conjugate:	This ALDH1A3 antibody is un-conjugated
Application:	Western Blotting (WB), Immunohistochemistry (IHC), Immunohistochemistry (Paraffin-embedded Sections) (IHC (p)), Flow Cytometry (FACS)

Product Details

Immunogen:	Human recombinant protein fragment corresponding to amino acids 1-100 and 413-512 of human ALDH1A3 (NP_000684) produced in E. coli.
	Type of Immunogen: Recombinant protein
Clone:	4E8
Isotype:	IgG1
Specificity:	Human ALDH1A3
Purification:	Protein A/G purified

Target Details

Target:	ALDH1A3
Alternative Name:	ALDH1A3 (ALDH1A3 Products)
Background:	Name/Gene ID: ALDH1A3 Synonyms: ALDH1A3, Acetaldehyde dehydrogenase 6, ALDH6, Aldehyde dehydrogenase 6, ALDH1A6, RALDH3, Retinaldehyde dehydrogenase 3, RALDH-3
Gene ID:	220
NCBI Accession:	NP_000684
UniProt:	P47895
Pathways:	Retinoic Acid Receptor Signaling Pathway

Application Details

Application Notes:	Approved: Flo (1:100), IHC, IHC-P (1:150), WB (1:200 - 1:2000)
Comment:	Target Species of Antibody: Human
Restrictions:	For Research Use only

Handling

Format:	Liquid
Concentration:	Lot specific
Buffer:	PBS, pH 7.3, 1 % BSA, 50 % glycerol, 0.02 % sodium azide
Preservative:	Sodium azide
Precaution of Use:	This product contains Sodium azide: a POISONOUS AND HAZARDOUS SUBSTANCE which should be handled by trained staff only.
Handling Advice:	Minimize freezing and thawing.
Storage:	-20 °C
Storage Comment:	Store at -20°C. Avoid freeze-thaw cycles.

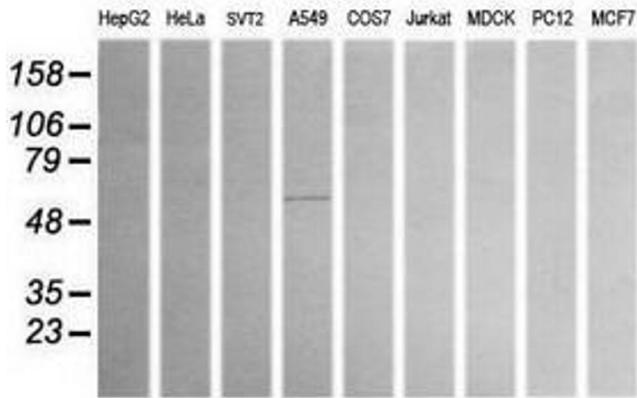
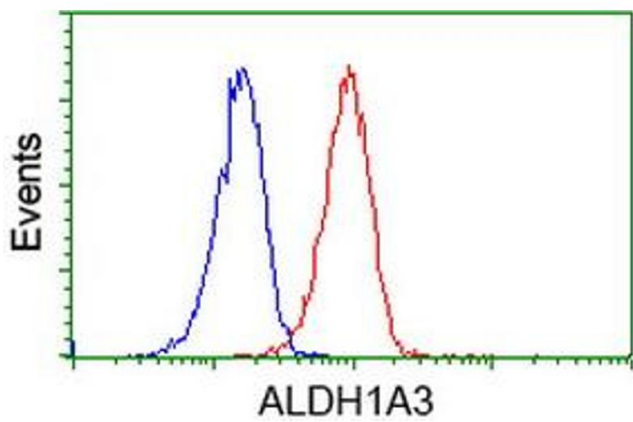
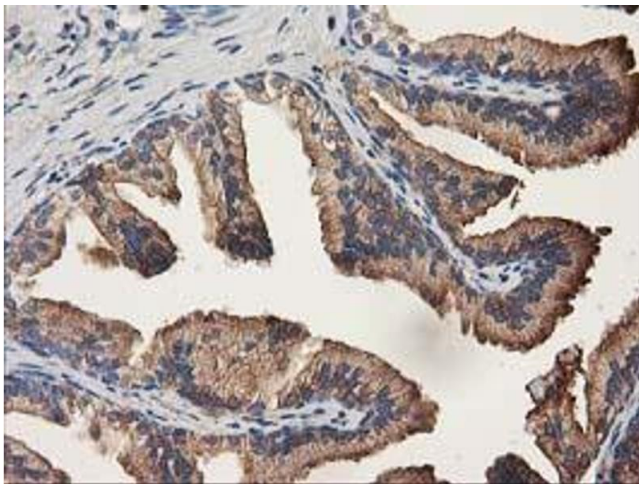


Image 1.



Flow Cytometry

Image 2.



Immunohistochemistry

Image 3.

Please check the [product details page](#) for more images. Overall 5 images are available for ABIN1490536.