



[Go to Product page](#)

Datasheet for ABIN1490568
anti-KRTAP2-4 antibody (AA 1-128)

3 Images

Overview

Quantity:	100 µL
Target:	KRTAP2-4
Binding Specificity:	AA 1-128
Reactivity:	Human
Host:	Mouse
Clonality:	Monoclonal
Conjugate:	This KRTAP2-4 antibody is un-conjugated
Application:	Flow Cytometry (FACS), Immunohistochemistry (IHC), Immunohistochemistry (Paraffin-embedded Sections) (IHC (p)), Western Blotting (WB)

Product Details

Immunogen:	Human recombinant protein fragment corresponding to amino acids 1-128 of human KRTAP2(NP_149440) produced in E. coli. Type of Immunogen: Recombinant protein
Clone:	3B4
Isotype:	IgG1
Specificity:	Human KRTAP2-4
Purification:	Protein A/G purified

Target Details

Target:	KRTAP2-4
Alternative Name:	KRTAP2-4 (KRTAP2-4 Products)
Background:	Name/Gene ID: KRTAP2-4 Synonyms: KRTAP2-4
Gene ID:	85294
NCBI Accession:	NP_149440

Application Details

Application Notes:	Approved: Flo (1:100), IHC, IHC-P (1:150), WB (1:500)
Comment:	Target Species of Antibody: Human
Restrictions:	For Research Use only

Handling

Format:	Liquid
Concentration:	Lot specific
Buffer:	PBS, pH 7.3, 1 % BSA, 50 % glycerol, 0.02 % sodium azide
Preservative:	Sodium azide
Precaution of Use:	This product contains Sodium azide: a POISONOUS AND HAZARDOUS SUBSTANCE which should be handled by trained staff only.
Storage:	-20 °C
Storage Comment:	Store at -20°C. Avoid freeze-thaw cycles.

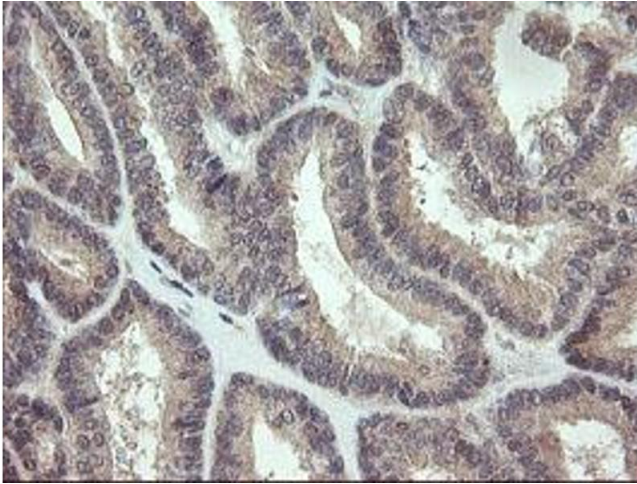


Image 1.

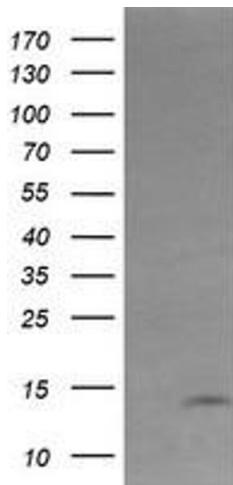


Image 2.

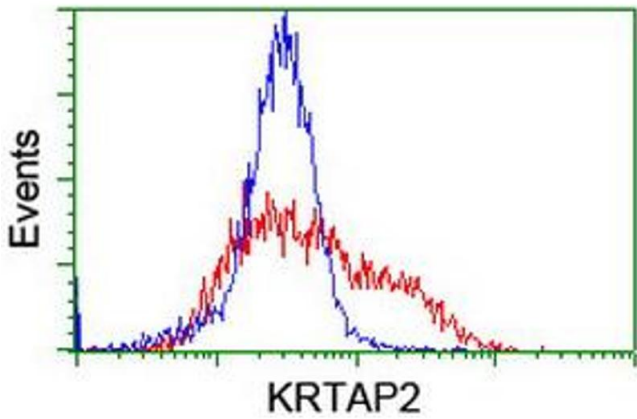


Image 3.