



[Go to Product page](#)

Datasheet for ABIN1490663  
**anti-CBX8 antibody (AA 1-260)**

4 Images

Overview

Quantity:	100 µL
Target:	CBX8
Binding Specificity:	AA 1-260
Reactivity:	Human
Host:	Mouse
Clonality:	Monoclonal
Conjugate:	This CBX8 antibody is un-conjugated
Application:	Western Blotting (WB), Immunohistochemistry (IHC), Immunohistochemistry (Paraffin-embedded Sections) (IHC (p))

Product Details

Immunogen:	Human recombinant protein fragment corresponding to amino acids 1-260 of human CBX8 (NP_065700) produced in E. coli.  Type of Immunogen: Recombinant protein
Clone:	3D1
Isotype:	IgG1
Specificity:	Human RC1 / CBX8
Purification:	Protein A/G purified

## Target Details

---

Target:	CBX8
Alternative Name:	CBX8 ( <a href="#">CBX8 Products</a> )
Background:	Name/Gene ID: CBX8  Synonyms: CBX8, Chromobox protein homolog 8, Pc class 3 homolog, Polycomb 3, RC1, PC3, Polycomb 3 homolog, Rectachrome 1, Chromobox homolog 8, HPC3
Gene ID:	57332
NCBI Accession:	<a href="#">NP_065700</a>
UniProt:	<a href="#">Q9HC52</a>

## Application Details

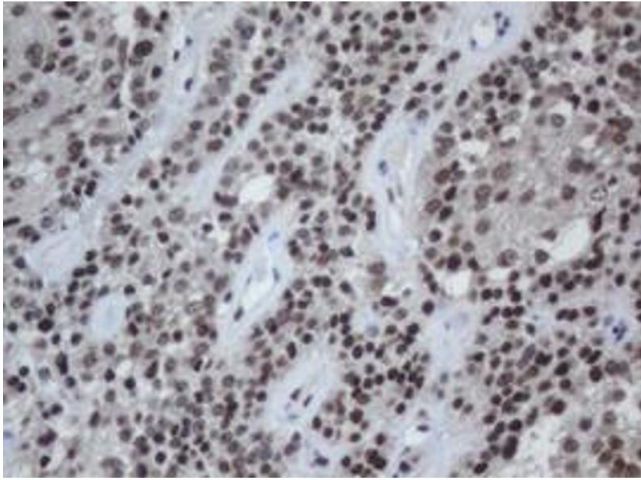
---

Application Notes:	Approved: IHC, IHC-P (1:500), WB (1:2000)
Comment:	Target Species of Antibody: Human
Restrictions:	For Research Use only

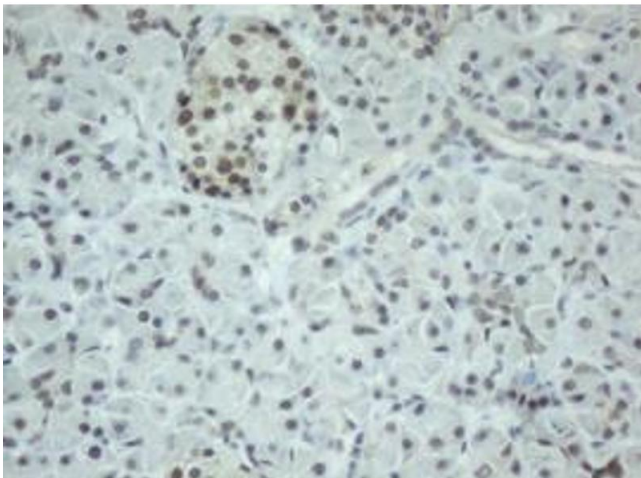
## Handling

---

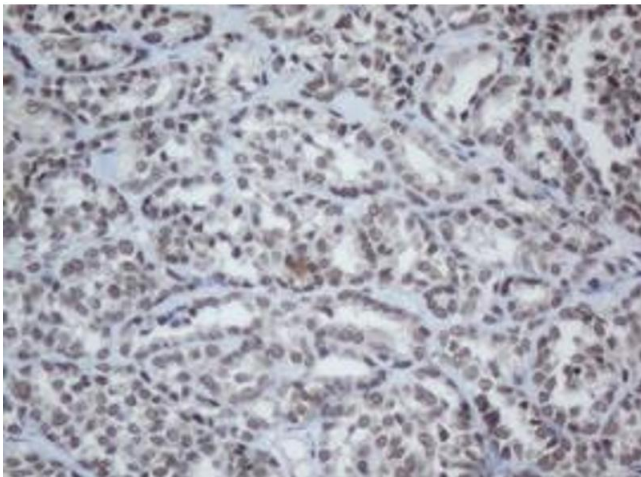
Format:	Liquid
Concentration:	Lot specific
Buffer:	PBS, pH 7.3, 1 % BSA, 50 % glycerol, 0.02 % sodium azide
Preservative:	Sodium azide
Precaution of Use:	This product contains Sodium azide: a POISONOUS AND HAZARDOUS SUBSTANCE which should be handled by trained staff only.
Handling Advice:	Minimize freezing and thawing.
Storage:	-20 °C
Storage Comment:	Store at -20°C. Avoid freeze-thaw cycles.



**Image 1.**



**Image 2.**



**Image 3.**

Please check the [product details page](#) for more images. Overall 4 images are available for ABIN1490663.