



[Go to Product page](#)

Datasheet for ABIN1490700
anti-STK38L antibody (AA 1-281)

3 Images

Overview

| | |
|----------------------|--|
| Quantity: | 100 µL |
| Target: | STK38L |
| Binding Specificity: | AA 1-281 |
| Reactivity: | Human |
| Host: | Mouse |
| Clonality: | Monoclonal |
| Conjugate: | This STK38L antibody is un-conjugated |
| Application: | Western Blotting (WB), Immunohistochemistry (IHC), Immunohistochemistry (Paraffin-embedded Sections) (IHC (p)) |

Product Details

| | |
|---------------|---|
| Immunogen: | Human recombinant protein fragment corresponding to amino acids 1-281 of human STK38L(NP_055815) produced in E. coli. Type of Immunogen: Recombinant protein |
| Clone: | 3E10 |
| Isotype: | IgG2a |
| Specificity: | Human STK38L / NDR2 |
| Purification: | Protein A/G purified |

Target Details

| | |
|-------------------|---|
| Target: | STK38L |
| Alternative Name: | STK38L / NDR2 (STK38L Products) |
| Background: | Name/Gene ID: STK38L Subfamily: NDR/LATS Family: Protein Kinase Synonyms: STK38L, KIAA0965, NDR2 protein kinase, Nuclear Dbf2-related kinase 2, Nuclear Dbf2-related 2, NDR2 |
| Gene ID: | 23012 |
| NCBI Accession: | NP_055815 |
| UniProt: | Q9Y2H1 |

Application Details

| | |
|--------------------|---|
| Application Notes: | Approved: IHC, IHC-P (1:150), WB (1:2000) |
| Comment: | Target Species of Antibody: Human |
| Restrictions: | For Research Use only |

Handling

| | |
|--------------------|--|
| Format: | Liquid |
| Concentration: | Lot specific |
| Buffer: | PBS, pH 7.3, 1 % BSA, 50 % glycerol, 0.02 % sodium azide |
| Preservative: | Sodium azide |
| Precaution of Use: | This product contains Sodium azide: a POISONOUS AND HAZARDOUS SUBSTANCE which should be handled by trained staff only. |
| Handling Advice: | Minimize freezing and thawing. |
| Storage: | -20 °C |
| Storage Comment: | Store at -20°C. Avoid freeze-thaw cycles. |

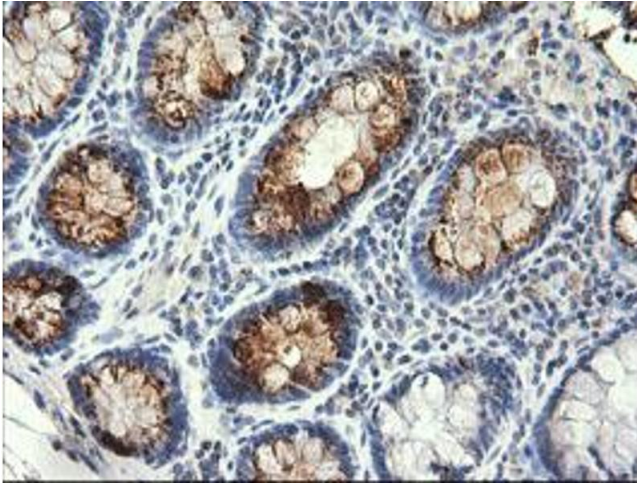


Image 1.

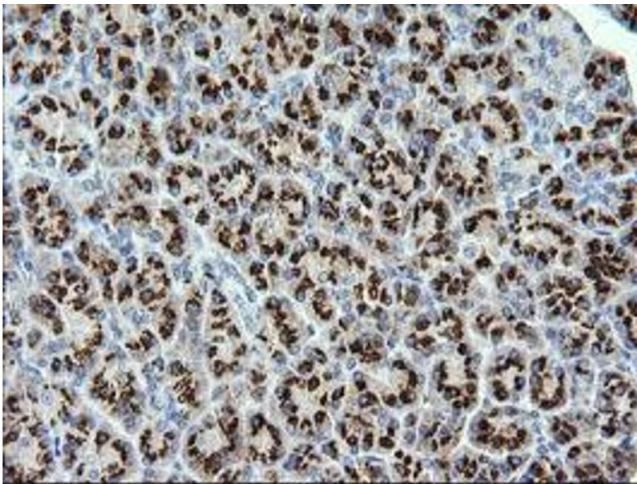


Image 2.

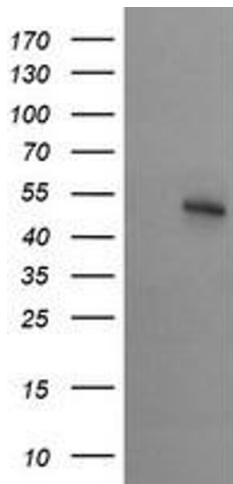


Image 3.