

Datasheet for ABIN1490744  
**anti-NUB1 antibody (AA 1-326)**



[Go to Product page](#)

4 Images

### Overview

Quantity:	100 µL
Target:	NUB1
Binding Specificity:	AA 1-326
Reactivity:	Human
Host:	Mouse
Clonality:	Monoclonal
Conjugate:	This NUB1 antibody is un-conjugated
Application:	Western Blotting (WB), Immunohistochemistry (IHC), Immunohistochemistry (Paraffin-embedded Sections) (IHC (p)), Flow Cytometry (FACS)

### Product Details

Immunogen:	Human recombinant protein fragment corresponding to amino acids 1-326 of human NUB1 (NP_057202) produced in E. coli.  Type of Immunogen: Recombinant protein
Clone:	2G1
Isotype:	IgG1
Specificity:	Human NUB1
Purification:	Protein A/G purified

## Target Details

---

Target:	NUB1
Alternative Name:	NUB1 ( <a href="#">NUB1 Products</a> )
Background:	Name/Gene ID: NUB1  Synonyms: NUB1, BS4, NEDD8 $\mu$ Ltimate buster 1, NEDD8 $\mu$ Ltimate buster-1, NUB1L, NYREN18
Gene ID:	51667
NCBI Accession:	<a href="#">NP_057202</a>
UniProt:	<a href="#">Q9Y5A7</a>

## Application Details

---

Application Notes:	Approved: Flo (1:100), IHC, IHC-P (1:150), WB (1:500 - 1:2000)
Comment:	Target Species of Antibody: Human
Restrictions:	For Research Use only

## Handling

---

Format:	Liquid
Concentration:	Lot specific
Buffer:	PBS, pH 7.3, 1 % BSA, 50 % glycerol, 0.02 % sodium azide
Preservative:	Sodium azide
Precaution of Use:	This product contains Sodium azide: a POISONOUS AND HAZARDOUS SUBSTANCE which should be handled by trained staff only.
Handling Advice:	Minimize freezing and thawing.
Storage:	-20 °C
Storage Comment:	Store at -20°C. Avoid freeze-thaw cycles.

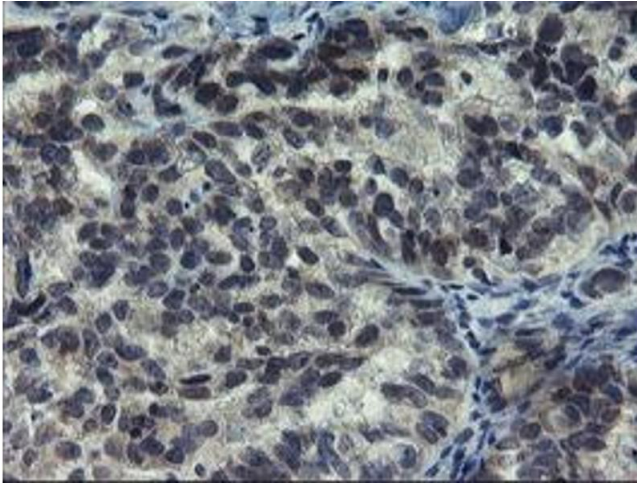


Image 1.

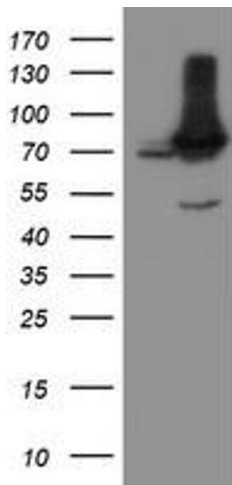


Image 2.

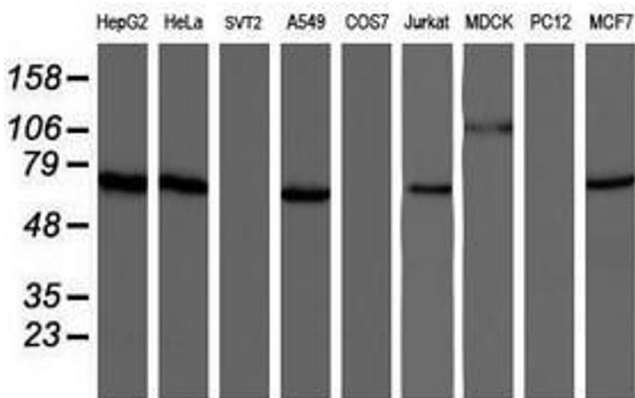


Image 3.

Please check the [product details page](#) for more images. Overall 4 images are available for ABIN1490744.