



[Go to Product page](#)

Datasheet for ABIN1490762
anti-NEFL antibody (AA 1-360)

5 Images

Overview

Quantity:	100 µL
Target:	NEFL
Binding Specificity:	AA 1-360
Reactivity:	Human
Host:	Mouse
Clonality:	Monoclonal
Conjugate:	This NEFL antibody is un-conjugated
Application:	Western Blotting (WB), Immunohistochemistry (IHC), Immunohistochemistry (Paraffin-embedded Sections) (IHC (p))

Product Details

Immunogen:	Human recombinant protein fragment corresponding to amino acids 1-360 of human NEFL (NP_006149) produced in E. coli. Type of Immunogen: Recombinant protein
Clone:	3G2
Isotype:	IgG1
Specificity:	Human NF-L / NEFL
Purification:	Protein A/G purified

Target Details

Target:	NEFL
Alternative Name:	NF-L / NEFL (NEFL Products)
Background:	Name/Gene ID: NEFL Synonyms: NEFL, 68 kDa neurofilament protein, CMT1F, CMT2E, NF68, NF-L, NFL, Neurofilament subunit NF-L
Gene ID:	4747
NCBI Accession:	NP_006149
UniProt:	P07196

Application Details

Application Notes:	Approved: IHC, IHC-P (1:150), WB (1:2000)
Comment:	Target Species of Antibody: Human
Restrictions:	For Research Use only

Handling

Format:	Liquid
Concentration:	Lot specific
Buffer:	PBS, pH 7.3, 1 % BSA, 50 % glycerol, 0.02 % sodium azide
Preservative:	Sodium azide
Precaution of Use:	This product contains Sodium azide: a POISONOUS AND HAZARDOUS SUBSTANCE which should be handled by trained staff only.
Handling Advice:	Minimize freezing and thawing.
Storage:	-20 °C
Storage Comment:	Store at -20°C. Avoid freeze-thaw cycles.

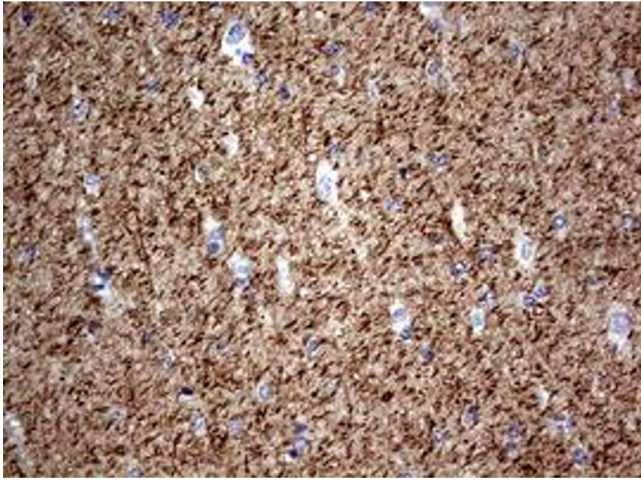


Image 1.

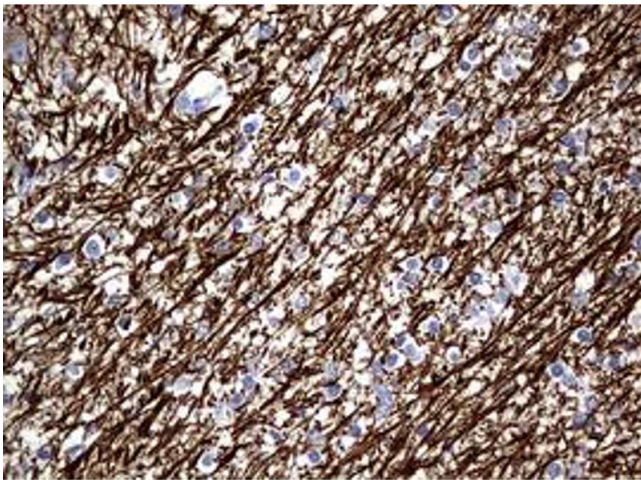


Image 2.

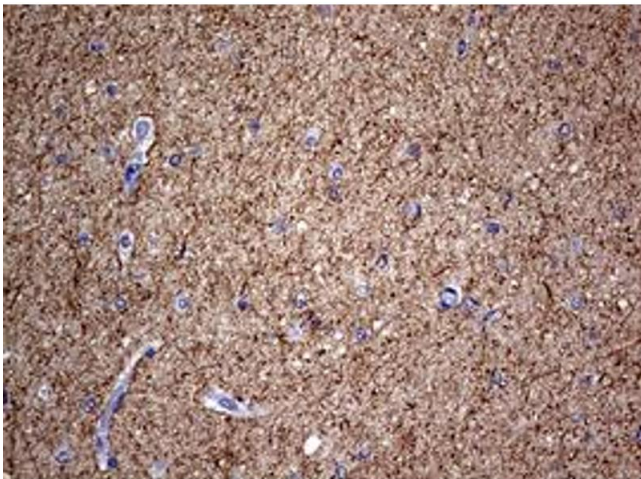


Image 3.

Please check the [product details page](#) for more images. Overall 5 images are available for ABIN1490762.