



[Go to Product page](#)

Datasheet for ABIN1490802
anti-PPT1 antibody (AA 100-306)

7 Images

Overview

Quantity:	100 µL
Target:	PPT1
Binding Specificity:	AA 100-306
Reactivity:	Human
Host:	Mouse
Clonality:	Monoclonal
Conjugate:	This PPT1 antibody is un-conjugated
Application:	Western Blotting (WB), Immunohistochemistry (IHC), Immunohistochemistry (Paraffin-embedded Sections) (IHC (p))

Product Details

Immunogen:	Human recombinant protein fragment corresponding to amino acids 100-306 of human PPT1 (NP_000301) produced in E. coli. Type of Immunogen: Recombinant protein
Clone:	1F10
Isotype:	IgG1
Specificity:	Human PPT1 / PPT
Purification:	Protein A/G purified

Target Details

Target:	PPT1
Alternative Name:	PPT1 / PPT (PPT1 Products)
Background:	Name/Gene ID: PPT1 Synonyms: PPT1, CLN1, Palmitoyl-protein hydrolase 1, Palmitoyl-protein thioesterase, INCL, PPT-1, PPT
Gene ID:	5538
NCBI Accession:	NP_000301
UniProt:	P50897
Pathways:	SARS-CoV-2 Protein Interactome

Application Details

Application Notes:	Approved: IHC, IHC-P (1:500), WB (1:2000)
Comment:	Target Species of Antibody: Human
Restrictions:	For Research Use only

Handling

Format:	Liquid
Concentration:	Lot specific
Buffer:	PBS, pH 7.3, 1 % BSA, 50 % glycerol, 0.02 % sodium azide
Preservative:	Sodium azide
Precaution of Use:	This product contains Sodium azide: a POISONOUS AND HAZARDOUS SUBSTANCE which should be handled by trained staff only.
Handling Advice:	Minimize freezing and thawing.
Storage:	-20 °C
Storage Comment:	Store at -20°C. Avoid freeze-thaw cycles.

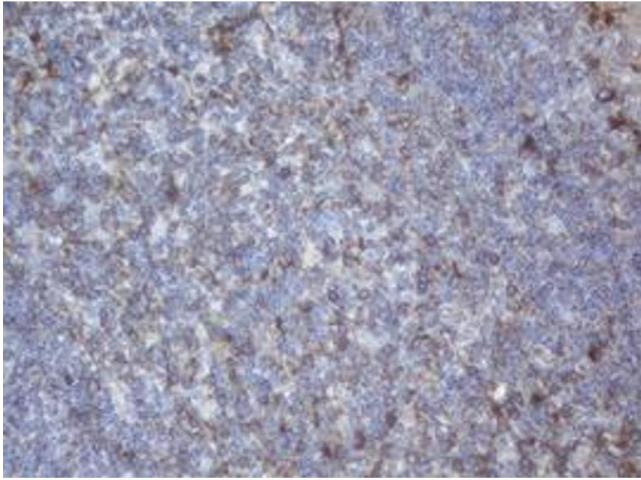


Image 1.

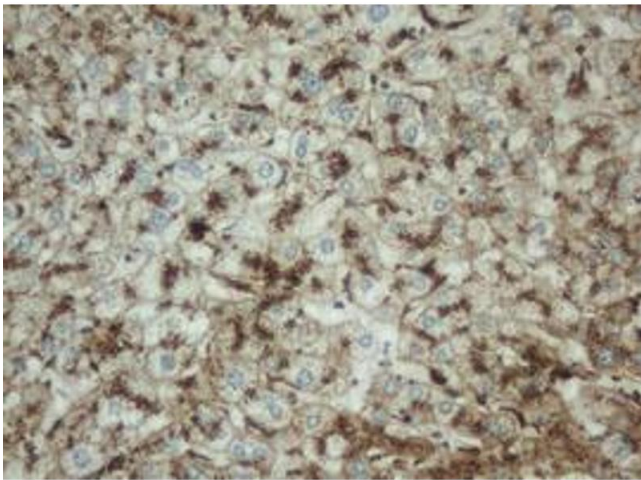


Image 2.

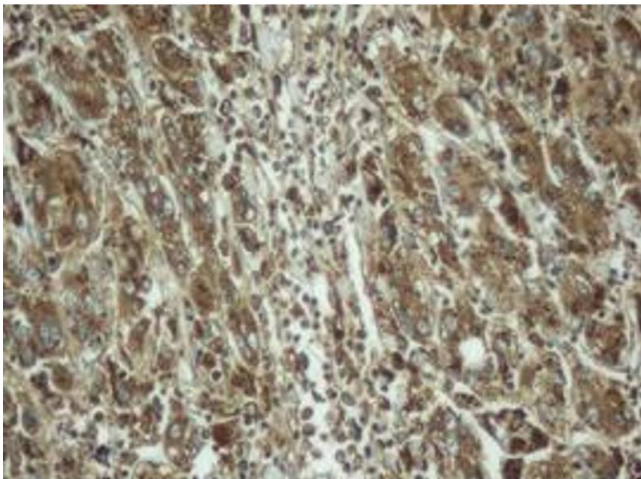


Image 3.

Please check the [product details page](#) for more images. Overall 7 images are available for ABIN1490802.