



Datasheet for ABIN1490803  
**anti-LHX1 antibody (AA 100-362)**



[Go to Product page](#)

4 Images

Overview

Quantity:	100 µL
Target:	LHX1
Binding Specificity:	AA 100-362
Reactivity:	Human
Host:	Mouse
Clonality:	Monoclonal
Conjugate:	This LHX1 antibody is un-conjugated
Application:	Western Blotting (WB), Immunohistochemistry (IHC), Immunofluorescence (IF), Immunohistochemistry (Paraffin-embedded Sections) (IHC (p)), Flow Cytometry (FACS)

Product Details

Immunogen:	Human recombinant protein fragment corresponding to amino acids 100-362 of human LHX1(NP_005559) produced in E. coli.  Type of Immunogen: Recombinant protein
Clone:	2D3
Isotype:	IgG1
Specificity:	Human LHX1
Purification:	Protein A/G purified

## Target Details

---

Target:	LHX1
Alternative Name:	LHX1 ( <a href="#">LHX1 Products</a> )
Background:	Name/Gene ID: LHX1  Synonyms: LHX1, Homeobox protein Lim-1, LIM1, HLim-1, LIM homeobox 1, LIM homeobox protein 1, LIM-1, LIM/homeobox protein Lhx1
Gene ID:	3975
NCBI Accession:	<a href="#">NP_005559</a>
UniProt:	<a href="#">P48742</a>

## Application Details

---

Application Notes:	Approved: Flo (1:100), IF (1:100), IHC, IHC-P (1:150), WB (1:2000)
Comment:	Target Species of Antibody: Human
Restrictions:	For Research Use only

## Handling

---

Format:	Liquid
Concentration:	Lot specific
Buffer:	PBS, pH 7.3, 1 % BSA, 50 % glycerol, 0.02 % sodium azide
Preservative:	Sodium azide
Precaution of Use:	This product contains Sodium azide: a POISONOUS AND HAZARDOUS SUBSTANCE which should be handled by trained staff only.
Handling Advice:	Minimize freezing and thawing.
Storage:	-20 °C
Storage Comment:	Store at -20°C. Avoid freeze-thaw cycles.

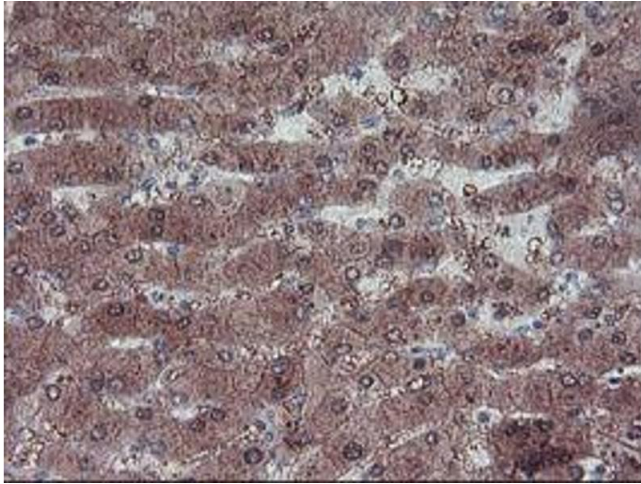


Image 1.

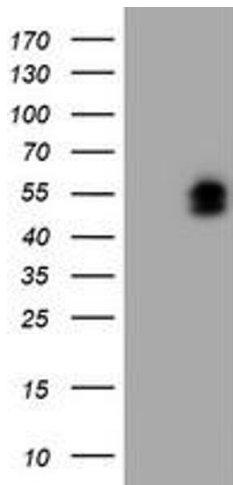


Image 2.

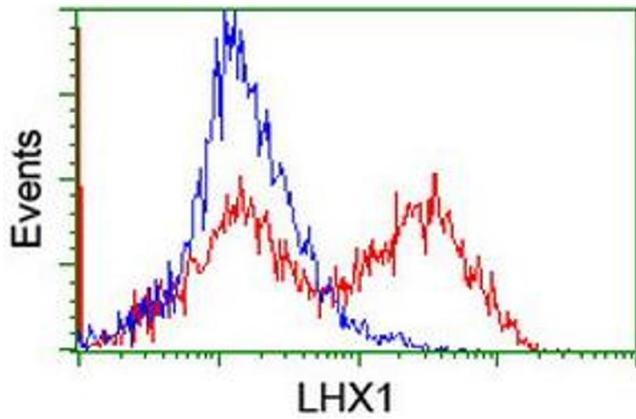


Image 3.

Please check the [product details page](#) for more images. Overall 4 images are available for ABIN1490803.