



[Go to Product page](#)

Datasheet for ABIN1490856
anti-Ki-67 antibody (AA 1160-1493)

4 Images

Overview

Quantity:	100 µL
Target:	Ki-67 (MKI67)
Binding Specificity:	AA 1160-1493
Reactivity:	Human
Host:	Rat
Clonality:	Monoclonal
Conjugate:	This Ki-67 antibody is un-conjugated
Application:	Immunohistochemistry (IHC), Immunohistochemistry (Paraffin-embedded Sections) (IHC (p))

Product Details

Immunogen: Human recombinant protein fragment corresponding to amino acids 1160-1493 of human MKI67 (NP_002408) produced in E. coli.

Type of Immunogen: Recombinant protein

Clone: 5B10

Isotype: IgG1

Specificity: Human Ki67

Purification: Protein A/G purified

Target Details

Target: Ki-67 (MKI67)

Target Details

Alternative Name: MKI67 / Ki67 ([MKI67 Products](#))

Background: Name/Gene ID: MKI67

Synonyms: MKI67, Antigen KI-67, Ki67, KIA

Gene ID: 4288

NCBI Accession: [NP_002408](#)

UniProt: [P46013](#)

Pathways: [Glycosaminoglycan Metabolic Process](#)

Application Details

Application Notes: Approved: IHC, IHC-P (1:150)

Comment: Target Species of Antibody: Human

Restrictions: For Research Use only

Handling

Format: Liquid

Concentration: Lot specific

Buffer: PBS, pH 7.3, 1 % BSA, 50 % glycerol, 0.02 % sodium azide

Preservative: Sodium azide

Precaution of Use: This product contains Sodium azide: a POISONOUS AND HAZARDOUS SUBSTANCE which should be handled by trained staff only.

Handling Advice: Minimize freezing and thawing.

Storage: -20 °C

Storage Comment: Store at -20°C. Avoid freeze-thaw cycles.

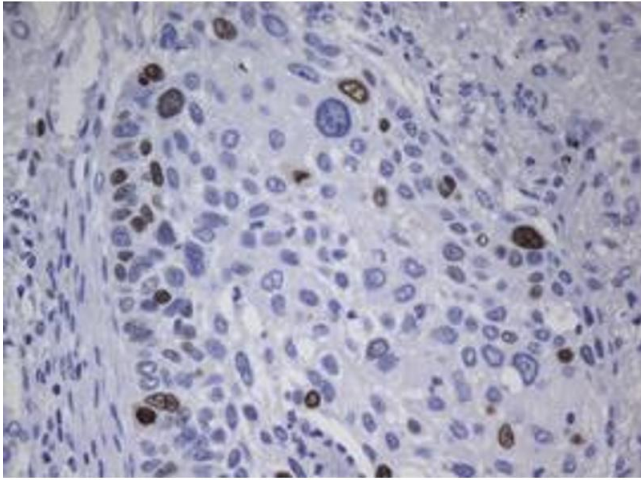


Image 1.

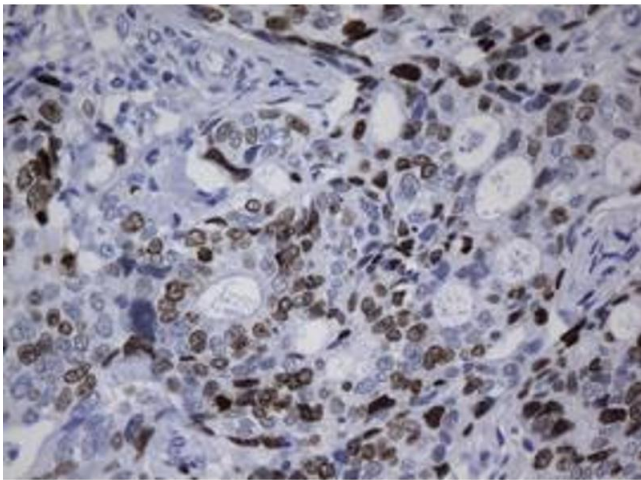


Image 2.

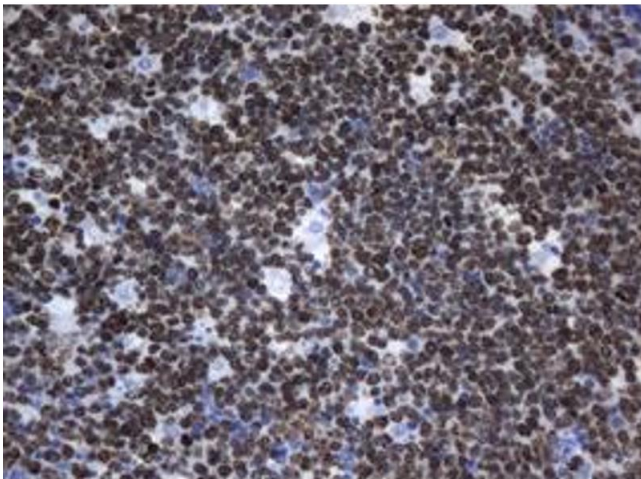


Image 3.

Please check the [product details page](#) for more images. Overall 4 images are available for ABIN1490856.