



[Go to Product page](#)

Datasheet for ABIN1490860
anti-Ki-67 antibody (AA 1160-1493)

6 Images

Overview

Quantity:	100 µL
Target:	Ki-67 (MKI67)
Binding Specificity:	AA 1160-1493
Reactivity:	Human
Host:	Rat
Clonality:	Monoclonal
Conjugate:	This Ki-67 antibody is un-conjugated
Application:	Immunohistochemistry (IHC), Western Blotting (WB), Immunohistochemistry (Paraffin-embedded Sections) (IHC (p))

Product Details

Immunogen:	Human recombinant protein fragment corresponding to amino acids 1160-1493 of human MKI67 (NP_002408) produced in E. coli. Type of Immunogen: Recombinant protein
Clone:	9C3
Isotype:	IgG1
Specificity:	Human Ki67
Purification:	Protein A/G purified

Target Details

Target:	Ki-67 (MKI67)
Alternative Name:	MKI67 / Ki67 (MKI67 Products)
Background:	Name/Gene ID: MKI67 Synonyms: MKI67, Antigen KI-67, Ki67, KIA
Gene ID:	4288
NCBI Accession:	NP_002408
UniProt:	P46013
Pathways:	Glycosaminoglycan Metabolic Process

Application Details

Application Notes:	Approved: IHC, IHC-P (1:150), WB (1:1000)
Comment:	Target Species of Antibody: Human
Restrictions:	For Research Use only

Handling

Format:	Liquid
Concentration:	Lot specific
Buffer:	PBS, pH 7.3, 1 % BSA, 50 % glycerol, 0.02 % sodium azide
Preservative:	Sodium azide
Precaution of Use:	This product contains Sodium azide: a POISONOUS AND HAZARDOUS SUBSTANCE which should be handled by trained staff only.
Handling Advice:	Minimize freezing and thawing.
Storage:	-20 °C
Storage Comment:	Store at -20°C. Avoid freeze-thaw cycles.

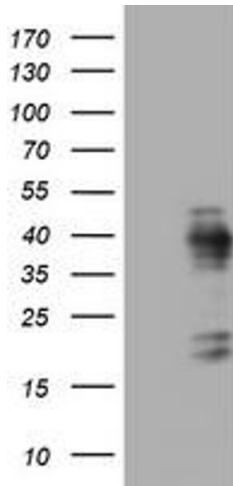


Image 1.

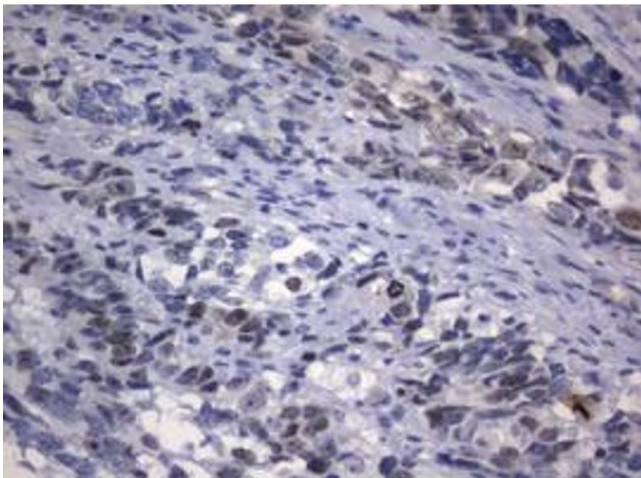


Image 2.

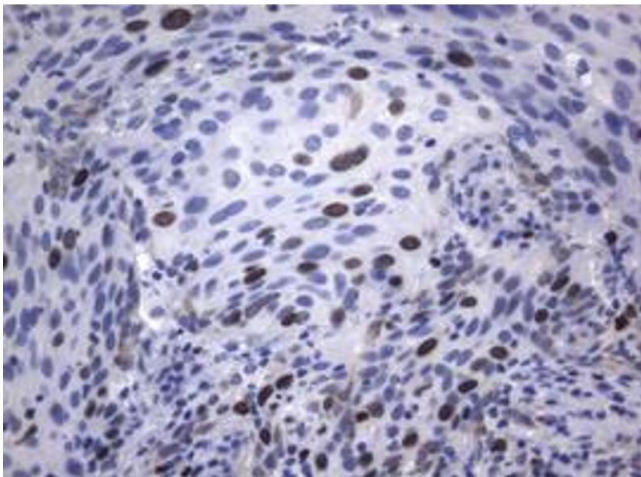


Image 3.

Please check the [product details page](#) for more images. Overall 6 images are available for ABIN1490860.