



[Go to Product page](#)

Datasheet for ABIN1490983
anti-EGR2 antibody (AA 156-476)

2 Images

Overview

Quantity:	100 µL
Target:	EGR2
Binding Specificity:	AA 156-476
Reactivity:	Human
Host:	Mouse
Clonality:	Monoclonal
Conjugate:	This EGR2 antibody is un-conjugated
Application:	Western Blotting (WB), Immunofluorescence (IF)

Product Details

Immunogen:	Human recombinant protein fragment corresponding to amino acids 156-476 of human EGR2(NP_000390) produced in E. coli. Type of Immunogen: Recombinant protein
Clone:	1F10
Isotype:	IgG2b
Specificity:	Human EGR2
Purification:	Protein A/G purified

Target Details

Target:	EGR2
---------	------

Target Details

Alternative Name:	EGR2 (EGR2 Products)
Background:	Name/Gene ID: EGR2 Family: Transcription factor Synonyms: EGR2, CMT1D, CMT4E, Early growth response 2, E3 SUMO-protein ligase EGR2, EGR-2, KROX20, Krox-20, AT591, Zinc finger protein Krox-20
Gene ID:	1959
NCBI Accession:	NP_000390
UniProt:	P11161

Application Details

Application Notes:	Approved: IF (1:100), WB (1:500)
Comment:	Target Species of Antibody: Human
Restrictions:	For Research Use only

Handling

Format:	Liquid
Concentration:	Lot specific
Buffer:	PBS, pH 7.3, 1 % BSA, 50 % glycerol, 0.02 % sodium azide
Preservative:	Sodium azide
Precaution of Use:	This product contains Sodium azide: a POISONOUS AND HAZARDOUS SUBSTANCE which should be handled by trained staff only.
Handling Advice:	Minimize freezing and thawing.
Storage:	-20 °C
Storage Comment:	Store at -20°C. Avoid freeze-thaw cycles.

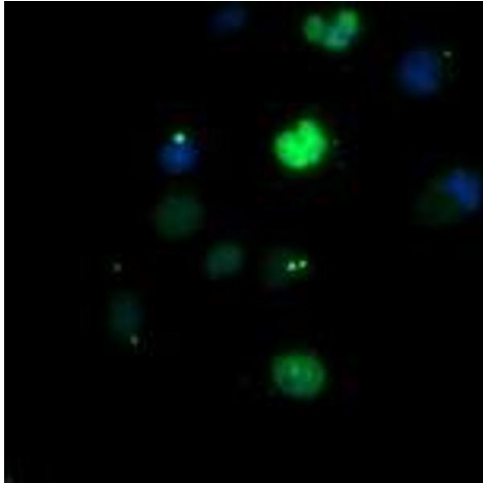


Image 1.

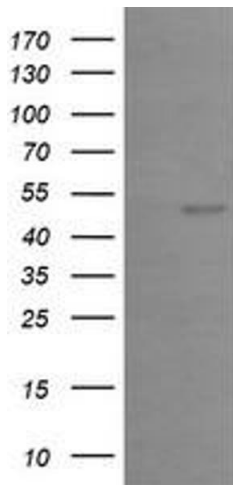


Image 2.