



[Go to Product page](#)

Datasheet for ABIN1491173

anti-14-3-3 zeta antibody (AA 200-245)

3 Images

Overview

Quantity:	50 µg
Target:	14-3-3 zeta (YWHAZ)
Binding Specificity:	AA 200-245
Reactivity:	Human, Mouse, Rat, Cow, Dog, Monkey
Host:	Rabbit
Clonality:	Polyclonal
Conjugate:	This 14-3-3 zeta antibody is un-conjugated
Application:	Western Blotting (WB), Immunohistochemistry (IHC), Immunohistochemistry (Paraffin-embedded Sections) (IHC (p))

Product Details

Brand:	IHC-plus™
Immunogen:	A portion of amino acids 200-245 of human 14-3-3 zeta. Type of Immunogen: Protein fragment
Specificity:	Human YWHAZ / Phospholipase A2.
Purification:	Protein A purified

Target Details

Target:	14-3-3 zeta (YWHAZ)
Alternative Name:	YWHAZ / 14-3-3 Zeta (YWHAZ Products)

Target Details

Background:	Name/Gene ID: YWHAZ Family: Phospholipase Synonyms: YWHAZ, 14-3-3 protein zeta/delta, 14-3-3-zeta, 14-3-3 delta, 14-3-3 protein zeta, 14-3-3 zeta, Phospholipase A2, YWHAD, KCIP-1
Gene ID:	7534
UniProt:	P63104
Pathways:	Apoptosis , Hormone Transport , Myometrial Relaxation and Contraction , Regulation of Leukocyte Mediated Immunity , Positive Regulation of Immune Effector Process , Synaptic Membrane , Production of Molecular Mediator of Immune Response , Maintenance of Protein Location

Application Details

Application Notes:	Approved: IHC, IHC-P (10 µg/mL), WB (1 - 3 µg/mL)
Comment:	Target Species of Antibody: Human
Restrictions:	For Research Use only

Handling

Format:	Liquid
Concentration:	Lot specific
Buffer:	PBS, 0.05 % BSA, 0.05 % sodium azide
Preservative:	Sodium azide
Precaution of Use:	This product contains Sodium azide: a POISONOUS AND HAZARDOUS SUBSTANCE which should be handled by trained staff only.
Storage:	4 °C, -20 °C
Storage Comment:	Store at 4°C for short term applications. For long term storage, aliquot and store at -20°C.

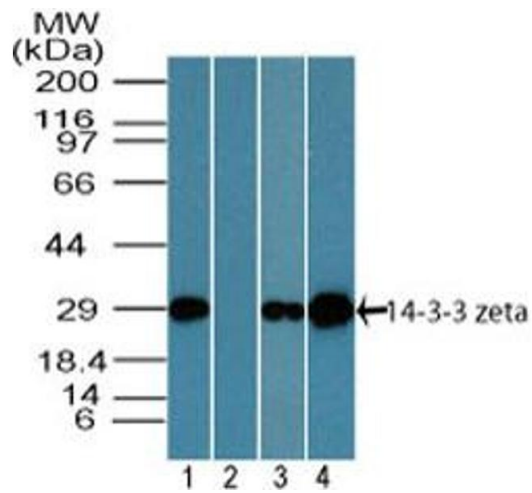


Image 1.

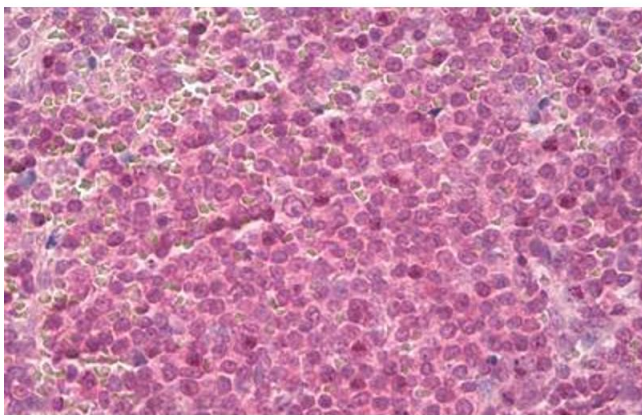
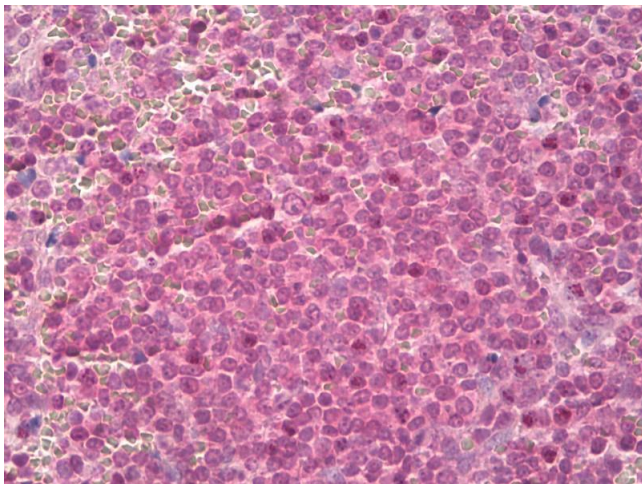


Image 2.



Immunohistochemistry

Image 3. Anti-14-3-3 Zeta antibody IHC of human spleen. Immunohistochemistry of formalin-fixed, paraffin-embedded tissue after heat-induced antigen retrieval. Antibody dilution 10 ug/ml.