



[Go to Product page](#)

Datasheet for ABIN1491195  
**anti-EPHX1 antibody (AA 21-230)**

2 Images

Overview

Quantity:	100 µL
Target:	EPHX1
Binding Specificity:	AA 21-230
Reactivity:	Human
Host:	Mouse
Clonality:	Monoclonal
Conjugate:	This EPHX1 antibody is un-conjugated
Application:	Western Blotting (WB), Flow Cytometry (FACS)

Product Details

Immunogen:	Human recombinant protein fragment corresponding to amino acids 21-230 of human EPHX1 (NP_000111) produced in E. coli.  Type of Immunogen: Recombinant protein
Clone:	2C1
Isotype:	IgG2b
Specificity:	Human EPHX / Epoxide Hydrolase
Purification:	Protein A/G purified

Target Details

Target:	EPHX1
---------	-------

## Target Details

---

Alternative Name:	EPHX1 / Epoxide Hydrolase 1 ( <a href="#">EPHX1 Products</a> )
Background:	Name/Gene ID: EPHX1 Subfamily: Serine S33 Family: Protease  Synonyms: EPHX1, Epoxide hydratase, Epoxide hydrolase, Epoxide hydrolase 1, HYL1, MEH, Microsomal epoxide hydrolase, EPHX, EPOX
Gene ID:	2052
NCBI Accession:	<a href="#">NP_000111</a>
UniProt:	<a href="#">P07099</a>

## Application Details

---

Application Notes:	Approved: Flo (1:100), WB (1:2000)
Comment:	Target Species of Antibody: Human
Restrictions:	For Research Use only

## Handling

---

Format:	Liquid
Concentration:	Lot specific
Buffer:	PBS, pH 7.3, 1 % BSA, 50 % glycerol, 0.02 % sodium azide
Preservative:	Sodium azide
Precaution of Use:	This product contains Sodium azide: a POISONOUS AND HAZARDOUS SUBSTANCE which should be handled by trained staff only.
Handling Advice:	Minimize freezing and thawing.
Storage:	-20 °C
Storage Comment:	Store at -20°C. Avoid freeze-thaw cycles.

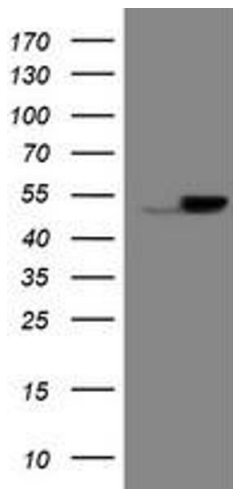


Image 1.

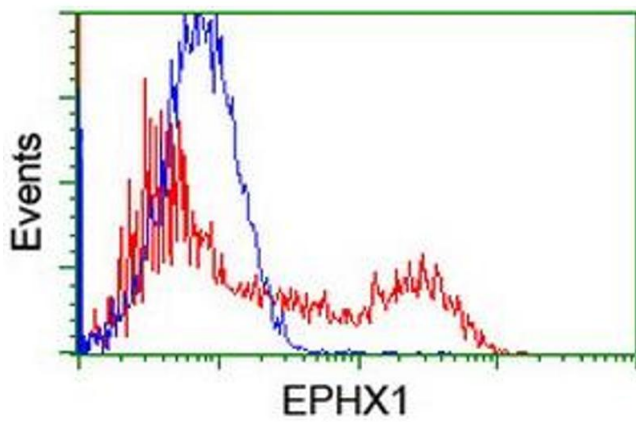


Image 2.