



Datasheet for ABIN1491232
anti-BMP1 antibody (AA 225-617)



[Go to Product page](#)

2 Images

Overview

Quantity:	100 µL
Target:	BMP1
Binding Specificity:	AA 225-617
Reactivity:	Human
Host:	Mouse
Clonality:	Monoclonal
Conjugate:	This BMP1 antibody is un-conjugated
Application:	Western Blotting (WB), Immunofluorescence (IF)

Product Details

Immunogen:	Human recombinant protein fragment corresponding to amino acids 225-617 of human BMP1(NP_001190) produced in E. coli. Type of Immunogen: Recombinant protein
Clone:	3E9
Isotype:	IgG1
Specificity:	Human BMP1
Purification:	Protein A/G purified

Target Details

Target:	BMP1
---------	------

Target Details

Alternative Name:	BMP1 / BMP-1 (BMP1 Products)
Background:	Name/Gene ID: BMP1 Subfamily: Metallopeptidase M12A Family: Protease Synonyms: BMP1, Bone morphogenetic protein 1, OI13, PCP-2, Procollagen C-proteinase-2, Procollagen C-proteinase, MTId, PCOLC, PCP-1, Procollagen C-endopeptidase, TLD, BMP-1, Mammalian tolloid, Mammalian tolloid protein, PCP
Gene ID:	649
NCBI Accession:	NP_001190
UniProt:	P13497
Pathways:	Lipid Metabolism

Application Details

Application Notes:	Approved: IF (1:100), WB (1:4000) Usage: Antibody does not work for IF with tissue samples, only cultured cell lines.
Comment:	Target Species of Antibody: Human
Restrictions:	For Research Use only

Handling

Format:	Liquid
Concentration:	Lot specific
Buffer:	PBS, pH 7.3, 1 % BSA, 50 % glycerol, 0.02 % sodium azide
Preservative:	Sodium azide
Precaution of Use:	This product contains Sodium azide: a POISONOUS AND HAZARDOUS SUBSTANCE which should be handled by trained staff only.
Handling Advice:	Minimize freezing and thawing.
Storage:	-20 °C
Storage Comment:	Store at -20°C. Avoid freeze-thaw cycles.

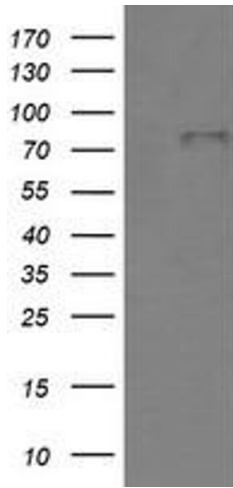


Image 1.

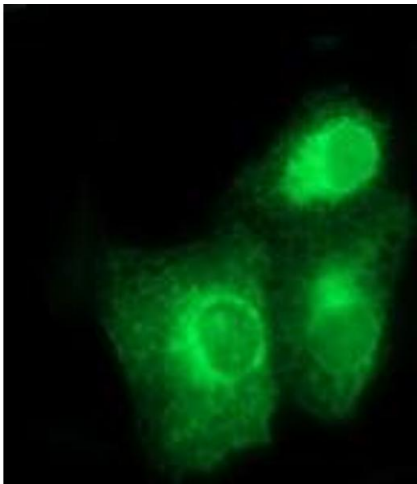


Image 2.