



[Go to Product page](#)

Datasheet for ABIN1491257

anti-Cytokeratin 19 antibody (AA 240-390)

5 Images

Overview

Quantity:	100 µL
Target:	Cytokeratin 19 (KRT19)
Binding Specificity:	AA 240-390
Reactivity:	Human, Dog
Host:	Mouse
Clonality:	Monoclonal
Conjugate:	This Cytokeratin 19 antibody is un-conjugated
Application:	Western Blotting (WB), Immunohistochemistry (IHC), Immunofluorescence (IF), Immunohistochemistry (Paraffin-embedded Sections) (IHC (p))

Product Details

Immunogen:	Human recombinant protein fragment corresponding to amino acids 240-390 of human CK19 (NP_002267) produced in E. coli. Type of Immunogen: Recombinant protein
Clone:	5D1
Isotype:	IgG1
Specificity:	Human CK19 / Cytokeratin 19
Purification:	Protein A/G purified

Target Details

Target:	Cytokeratin 19 (KRT19)
Alternative Name:	KRT19 / CK19 / Cytokeratin 19 (KRT19 Products)
Background:	Name/Gene ID: KRT19 Synonyms: KRT19, CK19, Cytokeratin 19, Cytokeratin-19, Keratin 19, Keratin-19, CK-19, K19, K1CS, Keratin, type I, 40-kd
Gene ID:	3880
NCBI Accession:	NP_002267
UniProt:	P08727

Application Details

Application Notes:	Approved: IF (1:50 - 1:100), IHC, IHC-P (1:50), WB (1:10000 - 1:20000) Usage: Concentration: 0.5-1.0 mg/mL (Lot dependent)
Comment:	Target Species of Antibody: Human
Restrictions:	For Research Use only

Handling

Format:	Liquid
Concentration:	Lot specific
Buffer:	PBS, pH 7.3, 1 % BSA, 50 % glycerol, 0.02 % sodium azide
Preservative:	Sodium azide
Precaution of Use:	This product contains Sodium azide: a POISONOUS AND HAZARDOUS SUBSTANCE which should be handled by trained staff only.
Handling Advice:	Minimize freezing and thawing.
Storage:	-20 °C
Storage Comment:	Store at -20°C. Avoid freeze-thaw cycles.

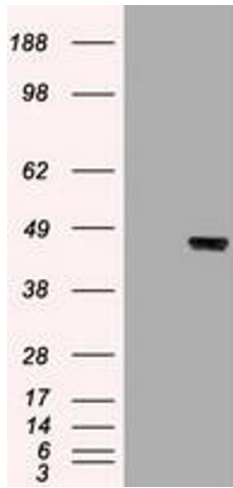
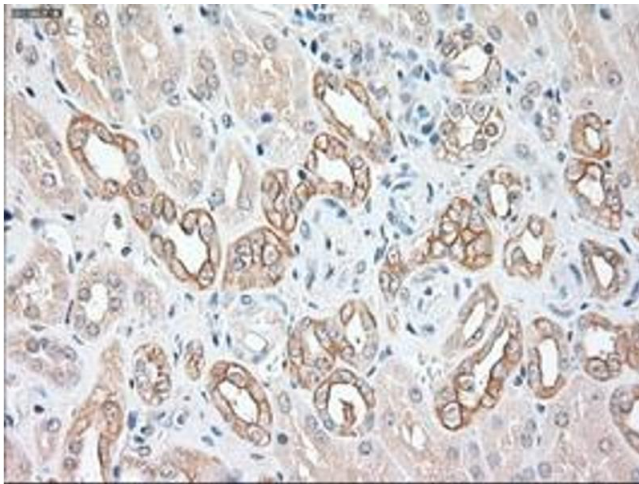


Image 1.



Immunohistochemistry

Image 2.

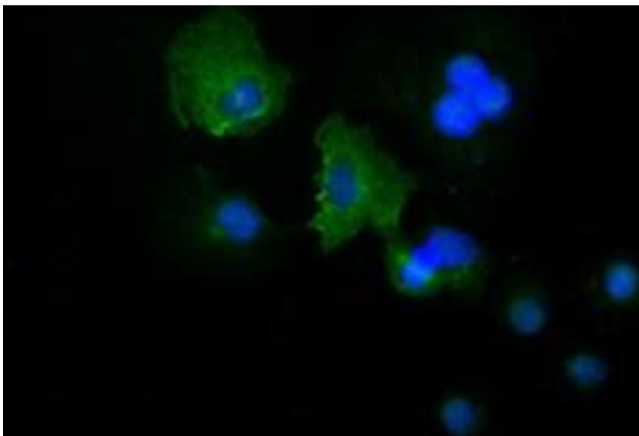


Image 3.

Please check the [product details page](#) for more images. Overall 5 images are available for ABIN1491257.