



[Go to Product page](#)

Datasheet for ABIN1491369
anti-SPG7 antibody (AA 300-573)

3 Images

Overview

Quantity:	100 µL
Target:	SPG7
Binding Specificity:	AA 300-573
Reactivity:	Human
Host:	Mouse
Clonality:	Monoclonal
Conjugate:	This SPG7 antibody is un-conjugated
Application:	Western Blotting (WB), Immunofluorescence (IF), Flow Cytometry (FACS)

Product Details

Immunogen:	Human recombinant protein fragment corresponding to amino acids 300-573 of human SPG7 (NP_003110) produced in E. coli. Type of Immunogen: Recombinant protein
Clone:	3H10
Isotype:	IgG1
Specificity:	Human Paraplegin / SPG7
Purification:	Protein A/G purified

Target Details

Target:	SPG7
---------	------

Target Details

Alternative Name:	Paraplegin / SPG7 (SPG7 Products)
Background:	Name/Gene ID: SPG7 Subfamily: Metallopeptidase M41 Family: Protease Synonyms: SPG7, Cell adhesion regulator, Cell matrix adhesion regulator, Paraplegin, PGN, SPG5C, Spastic paraplegia 7 protein, CAR, CMAR
Gene ID:	6687
NCBI Accession:	NP_003110
UniProt:	Q9UQ90

Application Details

Application Notes:	Approved: Flo (1:100), IF (1:100), WB (1:2000)
Comment:	Target Species of Antibody: Human
Restrictions:	For Research Use only

Handling

Format:	Liquid
Concentration:	Lot specific
Buffer:	PBS, pH 7.3, 1 % BSA, 50 % glycerol, 0.02 % sodium azide
Preservative:	Sodium azide
Precaution of Use:	This product contains Sodium azide: a POISONOUS AND HAZARDOUS SUBSTANCE which should be handled by trained staff only.
Handling Advice:	Minimize freezing and thawing.
Storage:	-20 °C
Storage Comment:	Store at -20°C. Avoid freeze-thaw cycles.

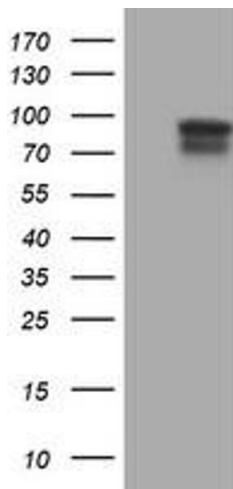


Image 1.

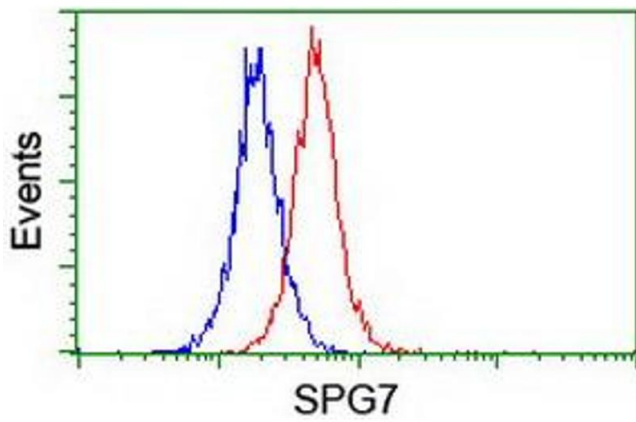


Image 2.

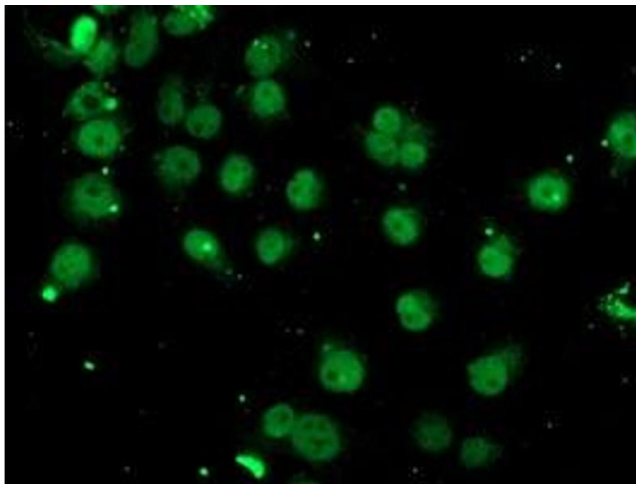


Image 3.