

Datasheet for ABIN1491389  
**anti-WFDC2 antibody (AA 31-124)**



[Go to Product page](#)

4 Images

## Overview

Quantity:	100 µL
Target:	WFDC2
Binding Specificity:	AA 31-124
Reactivity:	Human
Host:	Mouse
Clonality:	Monoclonal
Conjugate:	This WFDC2 antibody is un-conjugated
Application:	Western Blotting (WB), Immunohistochemistry (IHC), Immunohistochemistry (Paraffin-embedded Sections) (IHC (p))

## Product Details

Immunogen:	Human recombinant protein fragment corresponding to amino acids 31-124 of human WFDC2 (NP_006094) produced in E. coli.  Type of Immunogen: Recombinant protein
Clone:	1B9
Isotype:	IgG1
Specificity:	Human WFDC2 / HE4
Purification:	Protein A/G purified

## Target Details

---

Target:	WFDC2
Alternative Name:	WFDC2 / HE4 ( <a href="#">WFDC2 Products</a> )
Background:	Name/Gene ID: WFDC2  Synonyms: WFDC2, Epididymis-specific he4, Epididymal protein 4, DJ461P17.6, EDDM4, HE4, WAP5
Gene ID:	10406
NCBI Accession:	<a href="#">NP_006094</a>
UniProt:	<a href="#">Q14508</a>

## Application Details

---

Application Notes:	Approved: IHC, IHC-P (1:150), WB (1:2000)
Comment:	Target Species of Antibody: Human
Restrictions:	For Research Use only

## Handling

---

Format:	Liquid
Concentration:	Lot specific
Buffer:	PBS, pH 7.3, 1 % BSA, 50 % glycerol, 0.02 % sodium azide
Preservative:	Sodium azide
Precaution of Use:	This product contains Sodium azide: a POISONOUS AND HAZARDOUS SUBSTANCE which should be handled by trained staff only.
Handling Advice:	Minimize freezing and thawing.
Storage:	-20 °C
Storage Comment:	Store at -20°C. Avoid freeze-thaw cycles.

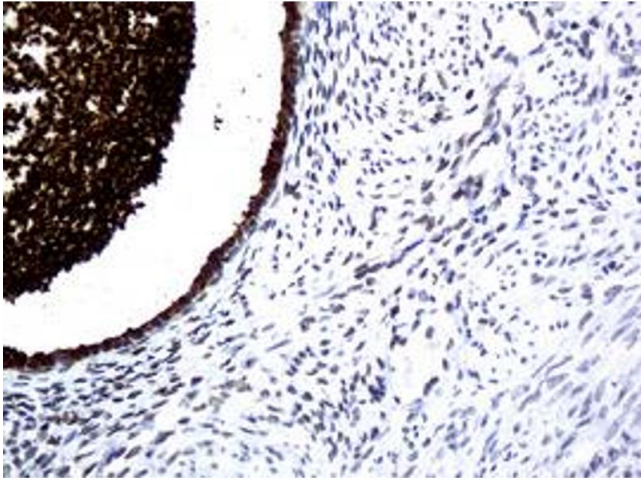


Image 1.

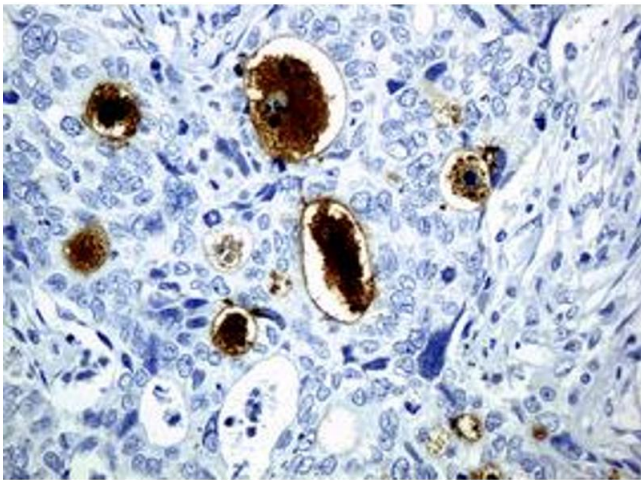


Image 2.

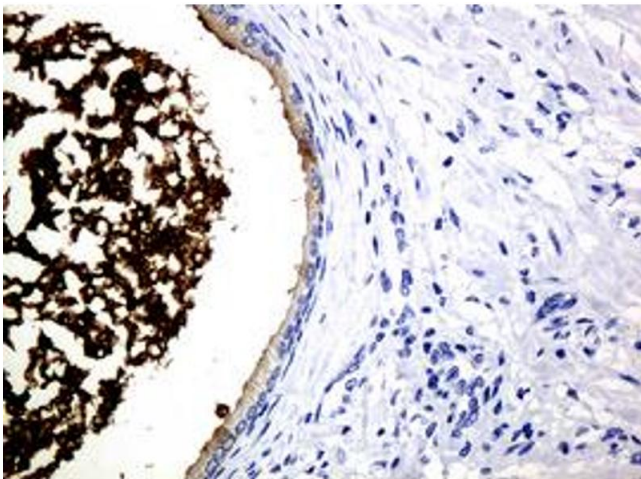


Image 3.

Please check the [product details page](#) for more images. Overall 4 images are available for ABIN1491389.