



Datasheet for ABIN1491517

## anti-LPA antibody



[Go to Product page](#)

### 6 Images

#### Overview

Quantity:	100 µL
Target:	LPA (APOA)
Reactivity:	Human
Host:	Mouse
Clonality:	Monoclonal
Conjugate:	This LPA antibody is un-conjugated
Application:	Western Blotting (WB), ELISA, Immunohistochemistry (IHC), Immunofluorescence (IF), Immunohistochemistry (Paraffin-embedded Sections) (IHC (p))

#### Product Details

Immunogen:	Purified recombinant fragment of human LPA (AA: 4330-4521) expressed in E. Coli.\ \
Clone:	4H1
Isotype:	IgG1
Specificity:	Human
Purification:	Purified

#### Target Details

Target:	LPA (APOA)
Alternative Name:	LPA / Lipoprotein A ( <a href="#">APOA Products</a> )
Background:	Name/Gene ID: LPA

## Target Details

---

Subfamily: Serine S1

Family: Protease

Synonyms: LPA, AK38, Apo(a), Antiangiogenic AK38 protein, Apolipoprotein(a), Apolipoprotein (a), Lipoprotein a, Lipoprotein (a), Lp(a), APOA, Lipoprotein, Lp(a)

---

Gene ID: 4018

---

UniProt: [P08519](#)

---

## Application Details

---

Application Notes: Approved: ELISA (1:10000), IF (1:200 - 1:1000), IHC, IHC-P (1:200 - 1:1000), WB (1:100 - 1:500)

---

Comment: Target Species of Antibody: Human

---

Restrictions: For Research Use only

---

## Handling

---

Format: Liquid

---

Concentration: Lot specific

---

Buffer: Purified antibody in PBS containing 0.05 % sodium azide

---

Preservative: Sodium azide

---

Precaution of Use: This product contains Sodium azide: a POISONOUS AND HAZARDOUS SUBSTANCE which should be handled by trained staff only.

---

Handling Advice: Avoid freeze-thaw cycles.

---

Storage: 4 °C, -20 °C

---

Storage Comment: Short term: 4°C  
Long term: -20°C.

---

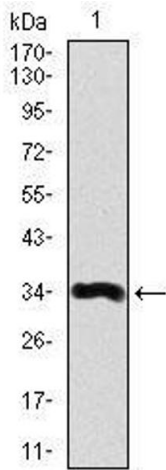


Image 1.

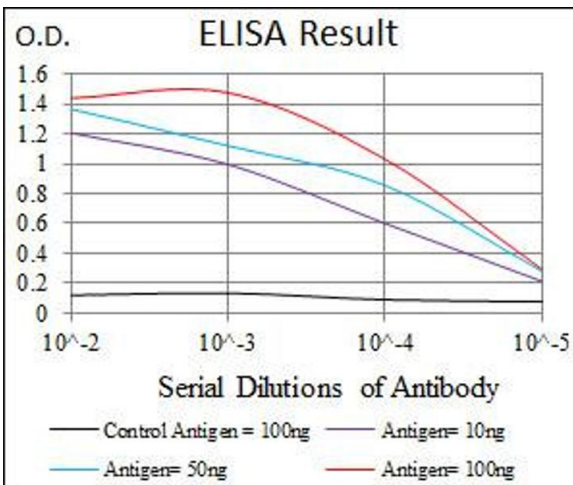


Image 2.

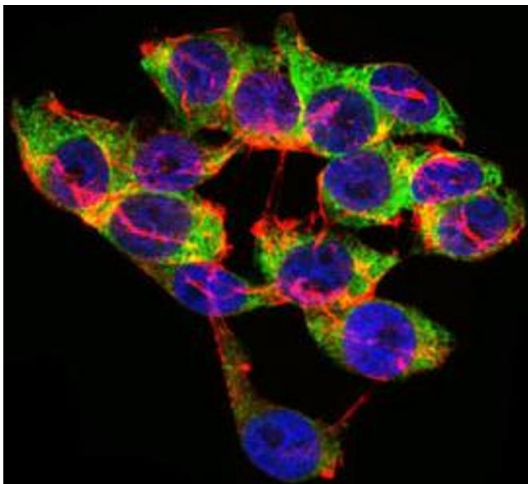


Image 3.

Please check the [product details page](#) for more images. Overall 6 images are available for ABIN1491517.