

Datasheet for ABIN1491610
anti-Surfactant Protein C antibody



[Go to Product page](#)

3 Images

Overview

Quantity:	100 µL
Target:	Surfactant Protein C (SFTPC)
Reactivity:	Human
Host:	Mouse
Clonality:	Monoclonal
Conjugate:	This Surfactant Protein C antibody is un-conjugated
Application:	Western Blotting (WB), ELISA

Product Details

Immunogen:	Purified recombinant fragment of human SFTPC (AA: 60-180) expressed in E. Coli.
Clone:	5E6A9
Isotype:	IgG1
Specificity:	Human
Purification:	Purified

Target Details

Target:	Surfactant Protein C (SFTPC)
Alternative Name:	SFTPC / Surfactant Protein C (SFTPC Products)
Background:	Name/Gene ID: SFTPC

Target Details

Synonyms: SFTPC, BRICD6, PSP-C, Pulmonary surfactant protein C, SMDP2, SFTP2, SP-C, Surfactant protein C

Gene ID: 6440

UniProt: [P11686](#)

Application Details

Application Notes: Approved: ELISA (1:10000), WB (1:100 - 1:500)

Comment: Target Species of Antibody: Human

Restrictions: For Research Use only

Handling

Format: Liquid

Concentration: Lot specific

Buffer: Purified antibody in PBS containing 0.05 % sodium azide

Preservative: Sodium azide

Precaution of Use: This product contains Sodium azide: a POISONOUS AND HAZARDOUS SUBSTANCE which should be handled by trained staff only.

Handling Advice: Avoid freeze-thaw cycles.

Storage: 4 °C, -20 °C

Storage Comment: Short term: 4°C
Long term: -20°C.

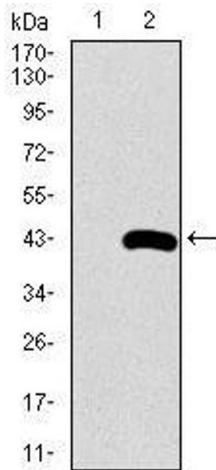


Image 1.

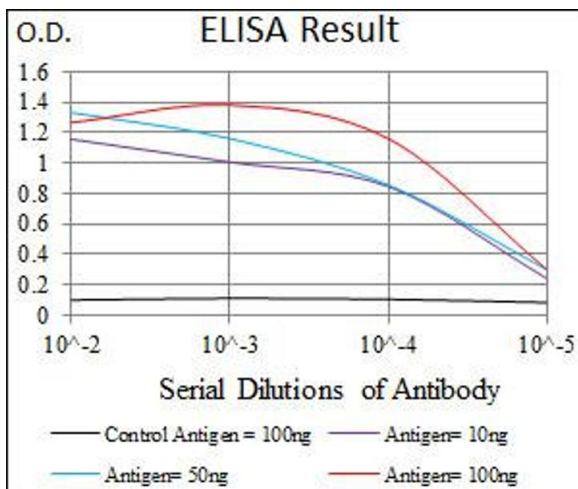


Image 2.

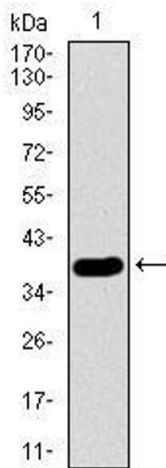


Image 3.