



[Go to Product page](#)

Datasheet for ABIN1491720  
**anti-AP2M1 antibody (AA 97-383)**

5 Images

Overview

Quantity:	100 µL
Target:	AP2M1
Binding Specificity:	AA 97-383
Reactivity:	Human, Rat, Dog
Host:	Mouse
Clonality:	Monoclonal
Conjugate:	This AP2M1 antibody is un-conjugated
Application:	Western Blotting (WB), Immunohistochemistry (IHC), Flow Cytometry (FACS), Immunohistochemistry (Paraffin-embedded Sections) (IHC (p))

Product Details

Immunogen:	Human recombinant protein fragment corresponding to amino acids 97-383 of human AP2M1 (NP_001020376) produced in E. coli.  Type of Immunogen: Recombinant protein
Clone:	2F11
Isotype:	IgG1
Specificity:	Human AP50 / AP2M1
Purification:	Protein A/G purified

## Target Details

---

Target:	AP2M1
Alternative Name:	AP50 / AP2M1 ( <a href="#">AP2M1 Products</a> )
Background:	Name/Gene ID: AP2M1  Synonyms: AP2M1, Adaptin-mu2, AP-2 complex subunit mu, AP-2 mu 2 chain, AP-2 mu chain, AP50, CLAPM1, Mu2, KIAA0109, HA2 50 kDa subunit
Gene ID:	1173
NCBI Accession:	<a href="#">NP_001020376</a>
UniProt:	<a href="#">Q96CW1</a>
Pathways:	<a href="#">EGFR Signaling Pathway</a> , <a href="#">Neurotrophin Signaling Pathway</a> , <a href="#">EGFR Downregulation</a> , <a href="#">SARS-CoV-2 Protein Interactome</a>

## Application Details

---

Application Notes:	Approved: Flo (1:100), IHC, IHC-P (1:150), WB (1:500 - 1:2000)
Comment:	Target Species of Antibody: Human
Restrictions:	For Research Use only

## Handling

---

Format:	Liquid
Concentration:	Lot specific
Buffer:	PBS, pH 7.3, 1 % BSA, 50 % glycerol, 0.02 % sodium azide
Preservative:	Sodium azide
Precaution of Use:	This product contains Sodium azide: a POISONOUS AND HAZARDOUS SUBSTANCE which should be handled by trained staff only.
Handling Advice:	Minimize freezing and thawing.
Storage:	-20 °C
Storage Comment:	Store at -20°C. Avoid freeze-thaw cycles.



Image 1.

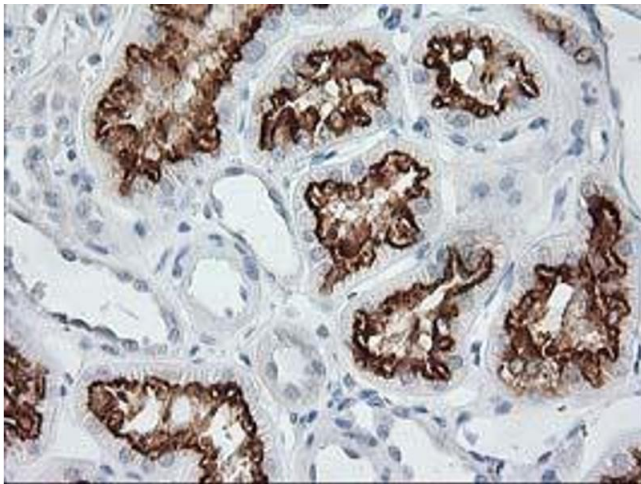
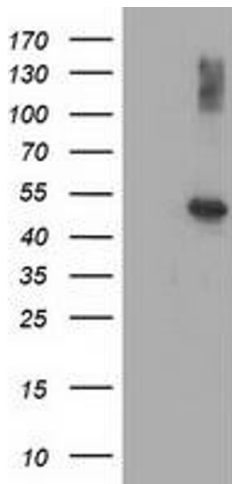


Image 2.



Western Blotting

Image 3.

Please check the [product details page](#) for more images. Overall 5 images are available for ABIN1491720.