

Datasheet for ABIN1492945  
**anti-OPCML antibody (C-Term)**



[Go to Product page](#)

2 Images

## Overview

Quantity:	100 µg
Target:	OPCML
Binding Specificity:	C-Term
Reactivity:	Human, Rat, Mouse
Host:	Rabbit
Clonality:	Polyclonal
Conjugate:	This OPCML antibody is un-conjugated
Application:	Western Blotting (WB), Immunohistochemistry (Paraffin-embedded Sections) (IHC (p)), Immunohistochemistry (IHC)

## Product Details

Immunogen:	Synthetic peptide mapping at the C-terminal of human OPCML, identical to the related rat and mouse sequence.  Type of Immunogen: Synthetic peptide
Specificity:	Human, mouse, rat. No cross reactivity with other proteins.
Cross-Reactivity (Details):	No cross reactivity with other proteins.
Purification:	Immunoaffinity purified

## Target Details

Target:	OPCML
---------	-------

## Target Details

---

Alternative Name:	OPCML / OBCAM ( <a href="#">OPCML Products</a> )
Background:	Name/Gene ID: OPCML  Synonyms: OPCML, IGLON1, OBCAM, OPCM, IgLON family member 1
Gene ID:	4978
UniProt:	<a href="#">Q14982</a>

## Application Details

---

Application Notes:	Optimal working dilution should be determined by the investigator.
Comment:	Target Species of Antibody: Human
Restrictions:	For Research Use only

## Handling

---

Format:	Liquid
Concentration:	Lot specific
Buffer:	5 mg BSA, 0.9 mg sodium chloride, 0.2 mg sodium phosphate, 0.05 mg Thimerosal, 0.05 mg sodium azide
Preservative:	Thimerosal (Merthiolate), Sodium azide
Precaution of Use:	This product contains Sodium azide and Thimerosal (Merthiolate): POISONOUS AND HAZARDOUS SUBSTANCES which should be handled by trained staff only.
Storage:	4 °C,-20 °C
Storage Comment:	Short term: 4°C Long term: -20°C.

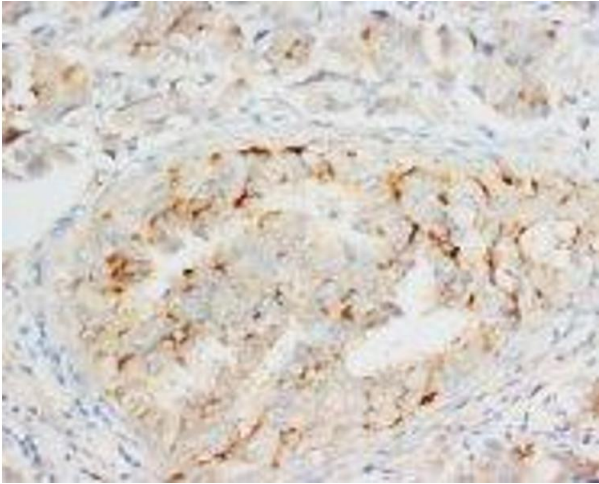


Image 1.

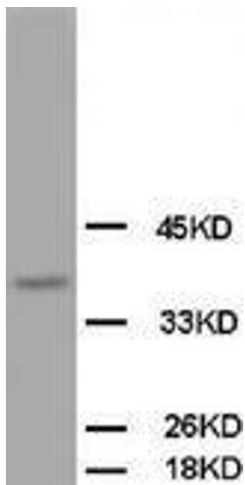


Image 2.