

Datasheet for ABIN1493317
anti-CKS1 antibody (C-Term)[Go to Product page](#)

2 Images

Overview

Quantity:	50 µg
Target:	CKS1 (CKS1B)
Binding Specificity:	C-Term
Reactivity:	Human
Host:	Rabbit
Clonality:	Polyclonal
Conjugate:	This CKS1 antibody is un-conjugated
Application:	Western Blotting (WB), ELISA, Immunofluorescence (IF), Immunohistochemistry (IHC), Immunohistochemistry (Paraffin-embedded Sections) (IHC (p)), Immunoprecipitation (IP)

Product Details

Brand:	IHC-plus™
Immunogen:	Synthetic peptide derived from the C-terminal region of human and mouse Cks1. Type of Immunogen: Synthetic peptide
Specificity:	Reacts with the human Cks1 protein. On Western blots, it identifies a single band at ~11kD. Bands of unknown origin at ~20, 30 and 100kD are also observed. Reactivity has been confirmed with HeLa cell lysates by Western blotting, immunofluorescence and immunoprecipitation, and with non-small cell lung carcinoma tissue by immunohistochemistry. Western blotting with purified Cks1 and Cks2 proteins was used to confirm that this antibody does not cross-react with Cks2. Cross-reactivity with mouse is expected based upon amino acid sequence homology.

Product Details

Cross-Reactivity (Details): Cross-reactivity with mouse is expected based upon amino acid sequence homology.

Purification: Immunoaffinity purified

Target Details

Target: CKS1 (CKS1B)

Alternative Name: CKS1B / CKS1 ([CKS1B Products](#))

Background: Name/Gene ID: CKS1B

Subfamily: CKS

Synonyms: CKS1B, CDC28 protein kinase 1, CKS-1, CDC28 protein kinase 1B, Ckshs1, PNAS-18, PNAS-143, PNAS-16, CDC2-associated protein CKS1, CKS1

Gene ID: 1163

UniProt: [P61024](#)

Pathways: [Mitotic G1-G1/S Phases](#), [Inositol Metabolic Process](#)

Application Details

Application Notes: Approved: ELISA (0.1 - 1 µg/mL), IF (10 µg/mL), IHC, IHC-P (5 µg/mL), IP, WB (1 - 3 µg/mL)

Usage: Suitable for use in ELISA, Western Blot, Immunofluorescence, Immunoprecipitation and Immunohistochemistry. ELISA: 0.1-1 µg/mL. Western Blot: 1-3 µg/mL. Immunofluorescence: 10 µg/mL. Immunoprecipitation: 7 µg/IP reaction. Immunohistochemistry: 2.5 µg/mL. Note: For immunohistochemistry with formalin-fixed, paraffin-embedded tissues, Heat Induced Epitope Retrieval (HIER) with citrate buffer, pH 6.0, is recommended.

Comment: Target Species of Antibody: Human

Restrictions: For Research Use only

Handling

Format: Liquid

Concentration: Lot specific

Buffer: PBS, pH 7.4, 0.1 % sodium azide.

Preservative: Sodium azide

Handling

Precaution of Use: This product contains Sodium azide: a POISONOUS AND HAZARDOUS SUBSTANCE which should be handled by trained staff only.

Handling Advice: Avoid repeat freeze-thaw cycles.

Storage: 4 °C, -20 °C

Storage Comment: Short term: 4°C. Long term: Store at -20°C. Avoid freeze-thaw cycles.

Images

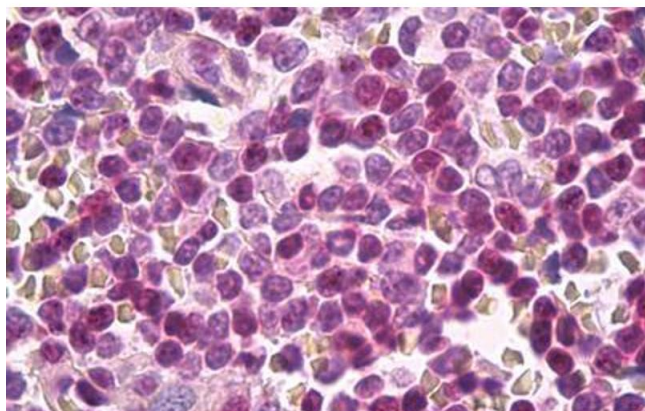
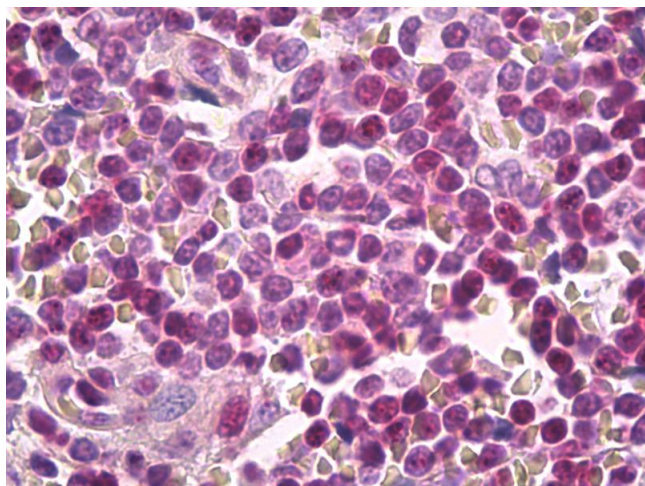


Image 1.



Immunohistochemistry

Image 2. Anti-CKS1 antibody IHC of human spleen. Immunohistochemistry of formalin-fixed, paraffin-embedded tissue after heat-induced antigen retrieval. Antibody dilution 5 ug/ml.