



[Go to Product page](#)

Datasheet for ABIN1493377
anti-INSL3 antibody (AA 115-131)

1 Image

Overview

Quantity:	100 µg
Target:	INSL3
Binding Specificity:	AA 115-131
Reactivity:	Human, Rat
Host:	Rabbit
Clonality:	Polyclonal
Conjugate:	This INSL3 antibody is un-conjugated
Application:	Western Blotting (WB), Immunohistochemistry (IHC), Immunohistochemistry (Paraffin-embedded Sections) (IHC (p))

Product Details

Immunogen:	Synthetic peptide corresponding to a sequence of the C-terminal of human INSL3 (115-131aa), different from the related rat and mouse sequence by three amino acids. Type of Immunogen: Synthetic peptide
Specificity:	Human, mouse, rat. No cross reactivity with other proteins.
Cross-Reactivity (Details):	No cross reactivity with other proteins.
Purification:	Immunoaffinity purified

Target Details

Target:	INSL3
---------	-------

Target Details

Alternative Name: [INSL3 \(INSL3 Products\)](#)

Background: Name/Gene ID: INSL3

Family: Hormone

Synonyms: INSL3, Insulin-like 3 (Leydig cell), Insulin-like 3, Ley-I-L, Leydig insulin-like peptide, Relaxin-like factor, RLNL, Tyrosine protein kinase jak3m, Relaxin-like factor b, Leydig insulin -like hormone

Gene ID: 3640

Pathways: [Hormone Activity](#), [cAMP Metabolic Process](#)

Application Details

Application Notes: Optimal working dilution should be determined by the investigator.

Comment: Target Species of Antibody: Human

Restrictions: For Research Use only

Handling

Format: Liquid

Concentration: Lot specific

Buffer: 5 mg BSA, 0.9 mg sodium chloride, 0.2 mg sodium phosphate, 0.05 mg Thimerosal, 0.05 mg sodium azide

Preservative: Thimerosal (Merthiolate), Sodium azide

Precaution of Use: This product contains Sodium azide and Thimerosal (Merthiolate): POISONOUS AND HAZARDOUS SUBSTANCES which should be handled by trained staff only.

Storage: 4 °C,-20 °C

Storage Comment: Short term: 4°C
Long term: -20°C.

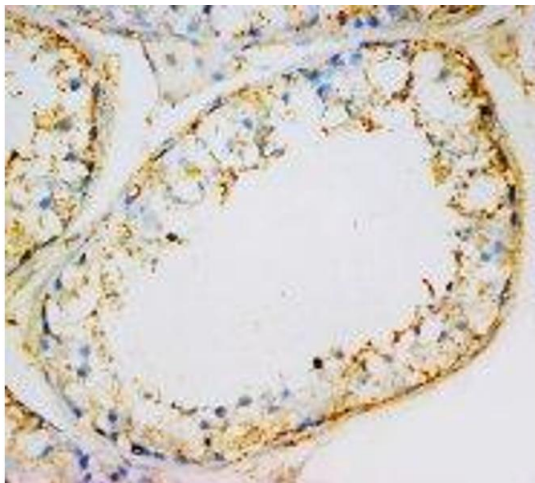


Image 1.