



[Go to Product page](#)

Datasheet for ABIN1493471

anti-Lamin B antibody (AA 570-586)

2 Images

Overview

Quantity:	100 µg
Target:	Lamin B
Binding Specificity:	AA 570-586
Reactivity:	Rat, Mouse, Human
Host:	Rabbit
Clonality:	Polyclonal
Application:	Western Blotting (WB), Immunohistochemistry (Paraffin-embedded Sections) (IHC (p)), Immunohistochemistry (IHC), Immunocytochemistry (ICC), Immunohistochemistry (Frozen Sections) (IHC (fro))

Product Details

Immunogen:	Synthetic peptide corresponding to a sequence at the C-terminal of human Lamin B (570-586 aa), different from rat sequence by one amino acid, mouse sequence by three amino acids. Type of Immunogen: Synthetic peptide
Specificity:	Human, mouse, rat. No cross reactivity with other proteins.
Cross-Reactivity (Details):	No cross reactivity with other proteins.
Purification:	Immunoaffinity purified

Target Details

Target:	Lamin B
---------	---------

Target Details

Abstract: [Lamin B Products](#)

Application Details

Application Notes: Optimal working dilution should be determined by the investigator.

Comment: Target Species of Antibody: Human

Restrictions: For Research Use only

Handling

Format: Liquid

Concentration: Lot specific

Buffer: 5 mg BSA, 0.9 mg sodium chloride, 0.2 mg sodium phosphate, 0.05 mg Thimerosal, 0.05 mg sodium azide

Preservative: Thimerosal (Merthiolate), Sodium azide

Precaution of Use: This product contains Sodium azide and Thimerosal (Merthiolate): POISONOUS AND HAZARDOUS SUBSTANCES which should be handled by trained staff only.

Storage: 4 °C,-20 °C

Storage Comment: Short term: 4°C
Long term: -20°C.

Images

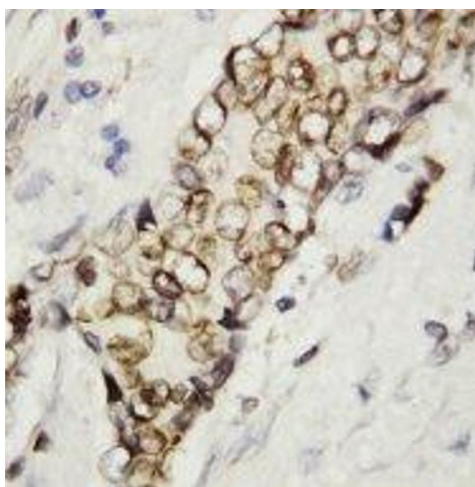


Image 1.

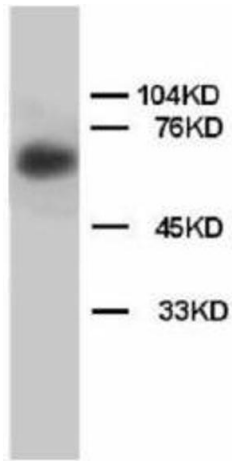


Image 2.