

Datasheet for ABIN1493901
anti-SFTPB antibody (AA 194-243)



[Go to Product page](#)

3 Images

Overview

Quantity:	50 µg
Target:	SFTPB
Binding Specificity:	AA 194-243
Reactivity:	Human, Pig, Rat, Dog, Guinea Pig
Host:	Rabbit
Clonality:	Polyclonal
Conjugate:	This SFTPB antibody is un-conjugated
Application:	Western Blotting (WB), Immunohistochemistry (IHC), Immunohistochemistry (Paraffin-embedded Sections) (IHC (p))

Product Details

Brand:	IHC-plus™
Immunogen:	Synthetic peptide located between aa194-243 of human SFTPB (B2RC55, NP_000533). Percent identity by BLAST analysis: Human, Gorilla, Gibbon, Galago, Rat, Dog, Guinea pig (100%), Monkey, Mouse (92%), Marmoset, Panda, Bovine, Pig (85%), Rabbit (84%). Type of Immunogen: Synthetic peptide
Isotype:	IgG
Specificity:	Human SFTPB / SP-B
Predicted Reactivity:	Percent identity by BLAST analysis: Human, Rat, Dog, Guinea pig (100%) Mouse (92%) Pig (85%).

Product Details

Purification: Immunoaffinity purified

Target Details

Target: SFTPB

Alternative Name: SFTPB / Surfactant Protein B ([SFTPB Products](#))

Background: Name/Gene ID: SFTPB

Synonyms: SFTPB, 6 kDa protein, PSP-B, SFTP3, SP-B, SFTB3, SMDP1, Surfactant protein B

Gene ID: 6439

NCBI Accession: [NP_000533](#)

Application Details

Application Notes: Approved: IHC, IHC-P (2.5 - 5 µg/mL), WB

Usage: ELISA titer using peptide based assay: 1:1562500. Western Blot: Suggested dilution at 1 µg/mL in 5 % skim milk / PBS buffer, and HRP conjugated anti-Rabbit IgG should be diluted in 1:50000 - 100000 as second antibody.

Comment: Target Species of Antibody: Human

Restrictions: For Research Use only

Handling

Format: Lyophilized

Reconstitution: Distilled Water.

Concentration: Lot specific

Buffer: Lyophilized from PBS with 2 % sucrose

Handling Advice: Avoid repeat freeze-thaw cycles.

Storage: 4 °C, -20 °C

Storage Comment: Long term: -20°C, the use of 50% glycerol is recommended if storing aliquots in -20°C for long term use (up to 1 year)

Short term (less than 1 week): 4°C. Avoid freeze-thaw cycles.

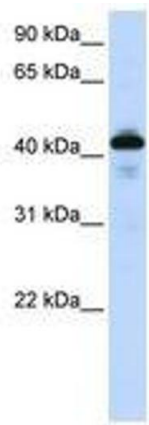


Image 1.

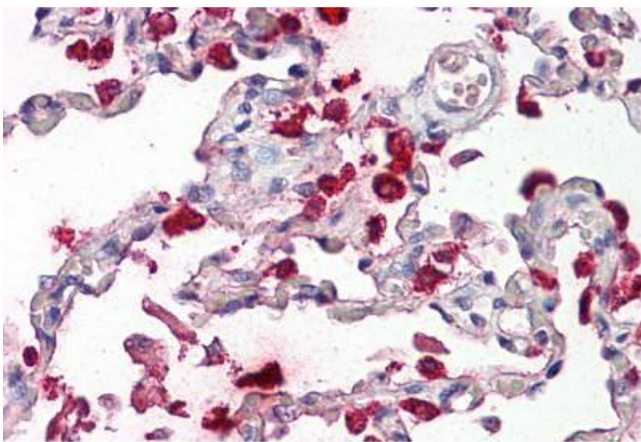
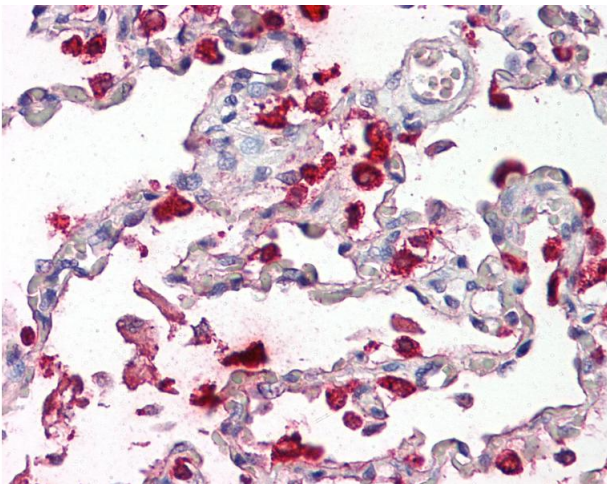


Image 2.



Immunohistochemistry

Image 3. Anti-Surfactant Protein B / SP-B antibody IHC of human lung. Immunohistochemistry of formalin-fixed, paraffin-embedded tissue after heat-induced antigen retrieval. Antibody dilution 2.5-5 ug/ml. This image was taken for the unconjugated form of this ...