



Datasheet for ABIN1494032
anti-HIP1R antibody (N-Term)



[Go to Product page](#)

3 Images

Overview

Quantity:	100 µL
Target:	HIP1R
Binding Specificity:	N-Term
Reactivity:	Human
Host:	Rabbit
Clonality:	Polyclonal
Conjugate:	This HIP1R antibody is un-conjugated
Application:	Western Blotting (WB), Immunohistochemistry (IHC), Immunofluorescence (IF), Immunohistochemistry (Paraffin-embedded Sections) (IHC (p)), Immunocytochemistry (ICC)

Product Details

Immunogen:	Recombinant fragment corresponding to a region within amino acids 14 and 261 of HIP1 Related (SwissProt O75146). Percent identity by BLAST analysis: Type of Immunogen: Recombinant protein
Isotype:	IgG
Specificity:	Human HIP1R
Predicted Reactivity:	Percent identity by BLAST analysis:
Purification:	Immunoaffinity purified

Target Details

Target:	HIP1R
Alternative Name:	HIP1R (HIP1R Products)
Background:	Name/Gene ID: HIP1R Synonyms: HIP1R, HIP1-related protein, HIP-12, KIAA0655, HIP12, HIP3, ILWEQ
Gene ID:	9026
UniProt:	075146

Application Details

Application Notes:	Approved: ICC (1:100 - 1:1000), IF (1:100 - 1:1000), IHC, IHC-P (1:100 - 1:1000), WB (1:500 - 1:3000) Usage: Suggested starting dilutions are as follows: Western blot: 1:500-1:3000, IHC-Paraffin: 1:100-1:1000 [suggested antigen retrieval using heat mediated 10 mM Citrate buffer (pH 6.0) or Tris-EDTA buffer (pH 8.0)], ICC/IF: 1:100-1:1000. Not yet tested in other applications. Optimal working dilutions should be determined experimentally by the end user.
Comment:	Target Species of Antibody: Human
Restrictions:	For Research Use only

Handling

Format:	Liquid
Concentration:	Lot specific
Buffer:	0.1 M Tris-glycine, pH 7, 20 % Glycerol, 0.01 % Thimerosal
Preservative:	Thimerosal (Merthiolate)
Precaution of Use:	This product contains Thimerosal (Merthiolate): a POISONOUS AND HAZARDOUS SUBSTANCE which should be handled by trained staff only.
Handling Advice:	Avoid freeze-thaw cycles.
Storage:	-20 °C
Storage Comment:	Aliquot and freeze at -20°C. Avoid freeze-thaw cycles.

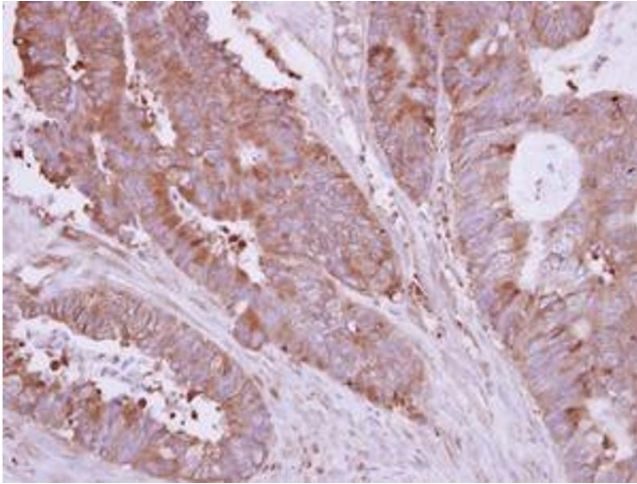


Image 1.

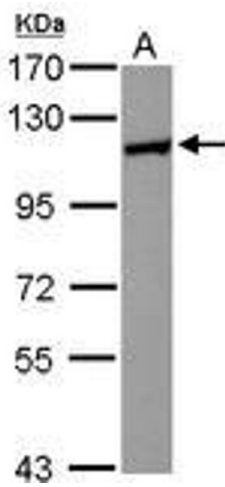


Image 2.

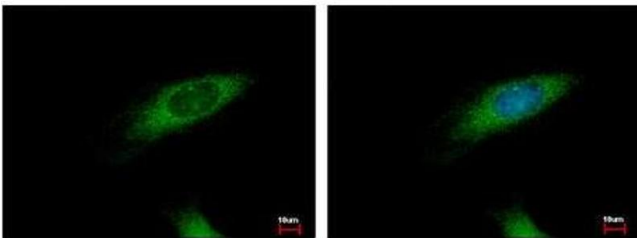


Image 3.