



[Go to Product page](#)

Datasheet for ABIN1494209

## anti-AKT1/2 antibody (N-Term)

### 2 Images

#### Overview

Quantity:	100 µg
Target:	AKT1/2
Binding Specificity:	N-Term
Reactivity:	Human, Mouse, Rat
Host:	Rabbit
Clonality:	Polyclonal
Conjugate:	This AKT1/2 antibody is un-conjugated
Application:	Western Blotting (WB), Immunohistochemistry (IHC), Immunohistochemistry (Paraffin-embedded Sections) (IHC (p))

#### Product Details

Immunogen:	Synthetic peptide corresponding to a sequence at the N-terminal of human AKT1/2, identical to the related rat and mouse sequence.  Type of Immunogen: Synthetic peptide
Specificity:	AKT.
Purification:	Immunoaffinity purified

#### Target Details

Target:	AKT1/2
Alternative Name:	AKT1 + AKT2 ( <a href="#">AKT1/2 Products</a> )

## Target Details

---

Background:	Name/Gene ID: AKT1/AKT2
	Synonyms: AKT1/AKT2
	This antibody detects: AKT1 + AKT2

## Application Details

---

Application Notes:	Optimal working dilution should be determined by the investigator.
Comment:	Target Species of Antibody: Human
Restrictions:	For Research Use only

## Handling

---

Format:	Liquid
Concentration:	Lot specific
Buffer:	5 mg BSA, 0.9 mg sodium chloride, 0.2 mg sodium phosphate, 0.05 mg Thimerosal, 0.05 mg sodium azide
Preservative:	Thimerosal (Merthiolate), Sodium azide
Precaution of Use:	This product contains Sodium azide and Thimerosal (Merthiolate): POISONOUS AND HAZARDOUS SUBSTANCES which should be handled by trained staff only.
Storage:	4 °C, -20 °C
Storage Comment:	Short term: 4°C Long term: -20°C.

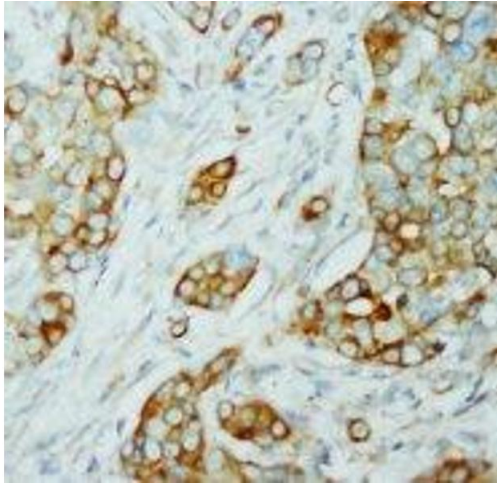


Image 1.

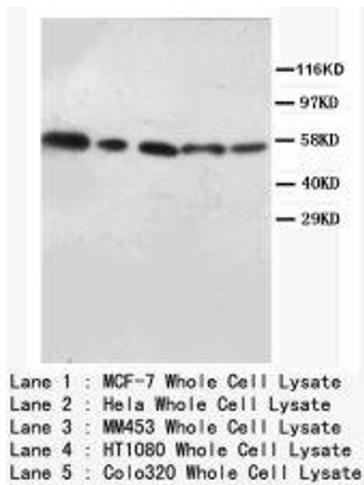


Image 2.