



[Go to Product page](#)

Datasheet for ABIN1494342
anti-CD248 antibody (N-Term)

1 Image

Overview

Quantity:	0.1 mg
Target:	CD248
Binding Specificity:	N-Term
Reactivity:	Human, Mouse, Rat
Host:	Rabbit
Clonality:	Polyclonal
Conjugate:	This CD248 antibody is un-conjugated
Application:	Western Blotting (WB), ELISA, Immunohistochemistry (IHC)

Product Details

Isotype:	IgG
Specificity:	At least two isoforms of TEM1 are known to exist, this antibody recognizes only the larger isoform.
Purification:	Immunoaffinity purified

Target Details

Target:	CD248
Alternative Name:	TEM1 / CD248 (CD248 Products)
Background:	Name/Gene ID: CD248

Synonyms: CD248, CD248 antigen, CD164 sialomucin-like 1, CD248 antigen, endosialin,

Target Details

CD248 Molecule, endosialin, Endosialin, TEM1, Tumor endothelial marker 1, CD164L1

Gene ID: 57124

UniProt: [Q9HCU0](#)

Application Details

Application Notes: Approved: ELISA, IHC (2.5 µg/mL), WB (0.5 - 1 µg/mL)

Not recommended for: IHC-P

Comment: Target Species of Antibody: Human

Restrictions: For Research Use only

Handling

Format: Liquid

Concentration: Lot specific

Buffer: PBS, 0.02 % sodium azide.

Preservative: Sodium azide

Precaution of Use: This product contains Sodium azide: a POISONOUS AND HAZARDOUS SUBSTANCE which should be handled by trained staff only.

Handling Advice: avoid freeze thaw cycles. Store undiluted.

Storage: 4 °C, -20 °C

Storage Comment: Store at 4°C for 3 months and -20°C, stable for up to 1 year. Avoid repeated freeze-thaw cycles.

Expiry Date: 12 months

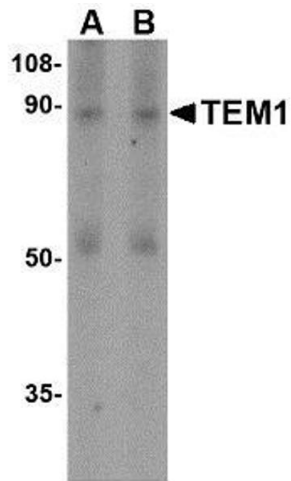


Image 1.