

Datasheet for ABIN1494672  
**anti-FBP1 antibody (AA 114-163)**

## 3 Images

[Go to Product page](#)

## Overview

Quantity:	100 µL
Target:	FBP1
Binding Specificity:	AA 114-163
Reactivity:	Human, Mouse, Rat, Zebrafish (Danio rerio), Dog, Monkey
Host:	Rabbit
Clonality:	Polyclonal
Conjugate:	This FBP1 antibody is un-conjugated
Application:	Western Blotting (WB), Immunohistochemistry (IHC), Immunohistochemistry (Paraffin-embedded Sections) (IHC (p))

## Product Details

Brand:	IHC-plus™
Immunogen:	Synthetic peptide located between aa114-163 of human FBP1 (P09467, NP_000498). Percent identity by BLAST analysis: Human, Gorilla, Monkey, Marmoset, Mouse (100%), Gibbon, Bat, Rabbit, Horse, Pig, Guinea pig (92%), Panda, Dog, Bovine, Platypus, Catfish (85%), Lizard (84%), Rat (78%).  Type of Immunogen: Synthetic peptide
Isotype:	IgG
Specificity:	Human FBP1
Predicted Reactivity:	Percent identity by BLAST analysis: Human, Mouse (100%) Rabbit, Pig (92%) Dog (85%).

## Product Details

Purification: Protein A purified

## Target Details

Target: FBP1

Alternative Name: FBP1 ([FBP1 Products](#))

Background: Name/Gene ID: FBP1

Synonyms: FBP1, Fructose-bisphosphatase 1, FBP, Fructose 1,6-bisphosphatase, Fructose-1,6-bisphosphatase 1, Growth-inhibiting protein 17, FBPase 1

Gene ID: 2203

NCBI Accession: [NP\\_000498](#)

UniProt: [P09467](#)

Pathways: [Cellular Glucan Metabolic Process](#), [Regulation of Carbohydrate Metabolic Process](#), [Dicarboxylic Acid Transport](#)

## Application Details

Application Notes: Approved: IHC, IHC-P (2.5 - 5 µg/mL), WB

Usage: ELISA titer using peptide based assay: 1:1562500. Western Blot: Suggested dilution at 1.25 µg/mL in 5 % skim milk / PBS buffer, and HRP conjugated anti-Rabbit IgG should be diluted in 1:50000 - 100000 as second antibody.

Comment: Target Species of Antibody: Human

Restrictions: For Research Use only

## Handling

Format: Lyophilized

Reconstitution: Distilled Water.

Concentration: Lot specific

Buffer: Lyophilized from PBS with 2 % sucrose

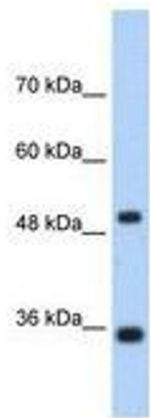
Handling Advice: Avoid repeat freeze-thaw cycles.

## Handling

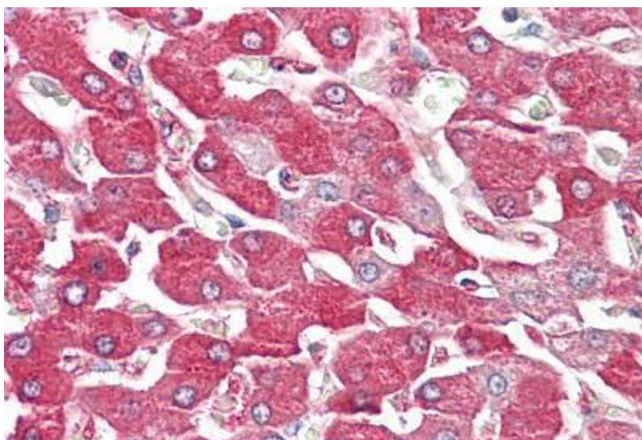
Storage: 4 °C, -20 °C

Storage Comment: Long term: -20°C, the use of 50% glycerol is recommended if storing aliquots in -20°C for long term use (up to 1 year)  
Short term (less than 1 week): 4°C. Avoid freeze-thaw cycles.

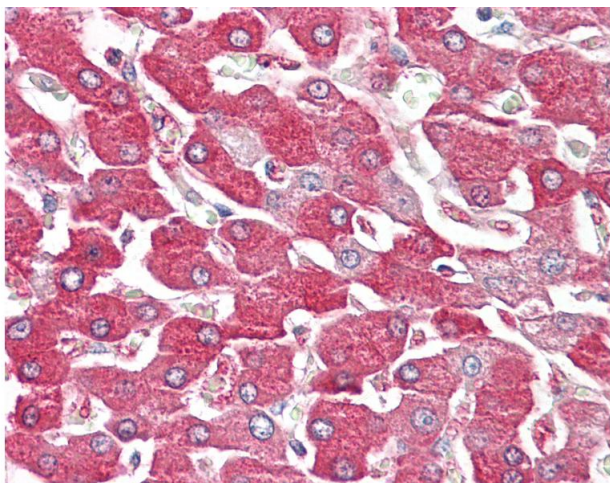
## Images



**Image 1.**



**Image 2.**



### Immunohistochemistry

**Image 3.** Anti-FBP1 antibody IHC of human liver. Immunohistochemistry of formalin-fixed, paraffin-embedded tissue after heat-induced antigen retrieval. Antibody dilution 2.5-5 ug/ml. This image was taken for the unconjugated form of this product. Other forms ...