

Datasheet for ABIN1494780
anti-MLL2 antibody (AA 2-14)[Go to Product page](#)

2 Images

Overview

| | |
|----------------------|--|
| Quantity: | 50 µg |
| Target: | MLL2 |
| Binding Specificity: | AA 2-14 |
| Reactivity: | Human |
| Host: | Goat |
| Clonality: | Polyclonal |
| Conjugate: | This MLL2 antibody is un-conjugated |
| Application: | ELISA, Immunohistochemistry (Paraffin-embedded Sections) (IHC (p)), Immunohistochemistry (IHC) |

Product Details

| | |
|-----------------------|---|
| Brand: | IHC-plus™ |
| Immunogen: | Synthetic peptide DSQNLAGEDKDSQ-C from the N-terminus of human MLL2 (NP_003473.3). Percent identity by BLAST analysis: Human, Gorilla, Gibbon (85%). Type of Immunogen: Synthetic peptide |
| Specificity: | Human MLL2. The immunizing peptide was designed from NP_003473.1. Since then the sequence has changed in the databases and currently differs at two locations in NP_003473.3. |
| Predicted Reactivity: | Percent identity by BLAST analysis: Human, Gorilla, Gibbon (85%). |
| Purification: | Immunoaffinity purified |

Target Details

| | |
|-------------------|--|
| Target: | MLL2 |
| Alternative Name: | KMT2D / MLL2 (MLL2 Products) |
| Background: | Name/Gene ID: KMT2D Synonyms: KMT2D, AAD10, ALL1-related protein, KABUK1, KMS, Lysine N-methyltransferase 2D, MLL2, Kabuki make-up syndrome, ALR, CAGL114, KMT2B, Lysine N-methyltransferase 2B, TNRC21 |
| Gene ID: | 8085 |
| NCBI Accession: | NP_003473 |
| UniProt: | O14686 |
| Pathways: | Intracellular Steroid Hormone Receptor Signaling Pathway , Regulation of Intracellular Steroid Hormone Receptor Signaling , Warburg Effect |

Application Details

| | |
|--------------------|--|
| Application Notes: | Approved: IHC, IHC-P (3.75 µg/mL), Peptide-ELISA (1:16000) |
| Comment: | Target Species of Antibody: Human |
| Restrictions: | For Research Use only |

Handling

| | |
|--------------------|--|
| Format: | Liquid |
| Concentration: | Lot specific |
| Buffer: | Tris-buffered saline, pH 7.3, 0.5 % BSA, 0.02 % sodium azide |
| Preservative: | Sodium azide |
| Precaution of Use: | This product contains Sodium azide: a POISONOUS AND HAZARDOUS SUBSTANCE which should be handled by trained staff only. |
| Handling Advice: | Minimize freezing and thawing. |
| Storage: | -20 °C |
| Storage Comment: | Store at -20°C. Avoid freeze-thaw cycles. |

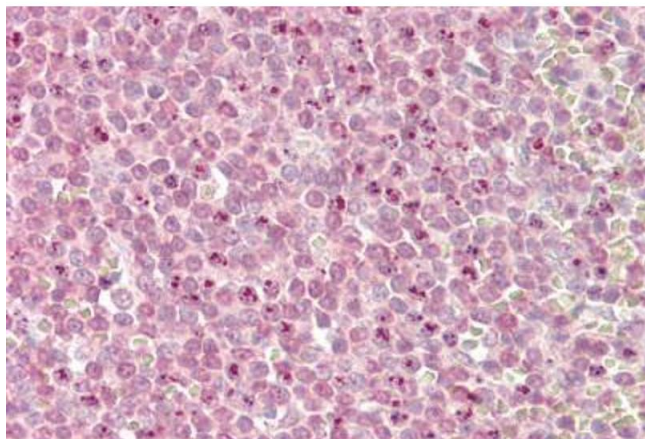
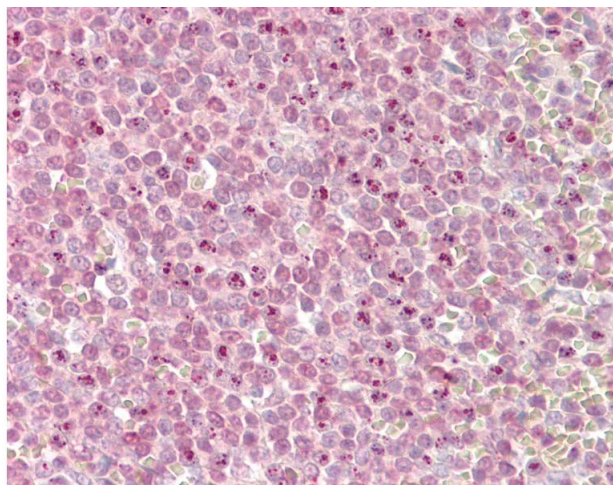


Image 1.



Immunohistochemistry

Image 2. Anti-MLL2 antibody IHC of human spleen. Immunohistochemistry of formalin-fixed, paraffin-embedded tissue after heat-induced antigen retrieval. Antibody dilution 3.75 ug/ml.