



Datasheet for ABIN1494785
anti-MYBL2 antibody (N-Term)



[Go to Product page](#)

3 Images

Overview

Quantity:	50 µg
Target:	MYBL2
Binding Specificity:	N-Term
Reactivity:	Human, Rat, Dog, Cow, Horse, Monkey, Guinea Pig, Chicken, Zebrafish (Danio rerio)
Host:	Rabbit
Clonality:	Polyclonal
Conjugate:	This MYBL2 antibody is un-conjugated
Application:	Western Blotting (WB), Immunohistochemistry (IHC), Immunohistochemistry (Paraffin-embedded Sections) (IHC (p))

Product Details

Brand:	IHC-plus™
Immunogen:	Synthetic peptide from N-Terminus of human MYBL2 (P10244, NP_002457). Percent identity by BLAST analysis: Human, Chimpanzee, Gorilla, Gibbon, Monkey, Galago, Marmoset, Elephant, Dog, Bovine, Horse, Turkey, Chicken (100%), Rabbit (92%), Seabass (91%), Guinea pig (85%), Zebrafish (83%), Rat (78%). Type of Immunogen: Synthetic peptide
Isotype:	IgG
Specificity:	Human MYBL2
Predicted Reactivity:	Percent identity by BLAST analysis: Human, Dog, Bovine, Horse, Chicken (100%) Rabbit (92%)

Product Details

Guinea pig (85%) Zebrafish (83%).

Purification: Immunoaffinity purified

Target Details

Target: MYBL2

Alternative Name: MYBL2 ([MYBL2 Products](#))

Background: Name/Gene ID: MYBL2

Synonyms: MYBL2, B-MYB, Myb-like protein 2, Myb-related protein B, BMYB

Gene ID: 4605

NCBI Accession: [NP_002457](#)

UniProt: [P10244](#)

Pathways: [Cell Division Cycle](#), [Mitotic G1-G1/S Phases](#), [Chromatin Binding](#)

Application Details

Application Notes: Approved: IHC, IHC-P (5 - 10 µg/mL), WB (0.2 - 1 µg/mL)

Comment: Target Species of Antibody: Human

Restrictions: For Research Use only

Handling

Format: Lyophilized

Reconstitution: After adding water, will consist of PBS buffer with 2 % sucrose

Concentration: Lot specific

Buffer: Lyophilized.

Handling Advice: Avoid repeat freeze-thaw cycles.

Storage: 4 °C, -20 °C

Storage Comment: Long term: -20°C, the use of 50% glycerol is recommended if storing aliquots in -20°C for long term use (up to 1 year)

Short term (less than 1 week): 4°C. Avoid freeze-thaw cycles.



Image 1.

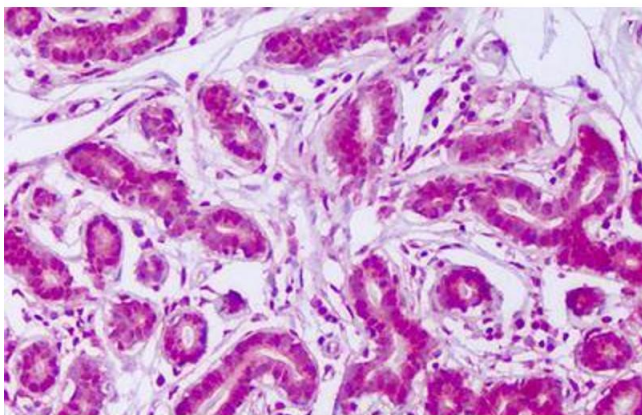
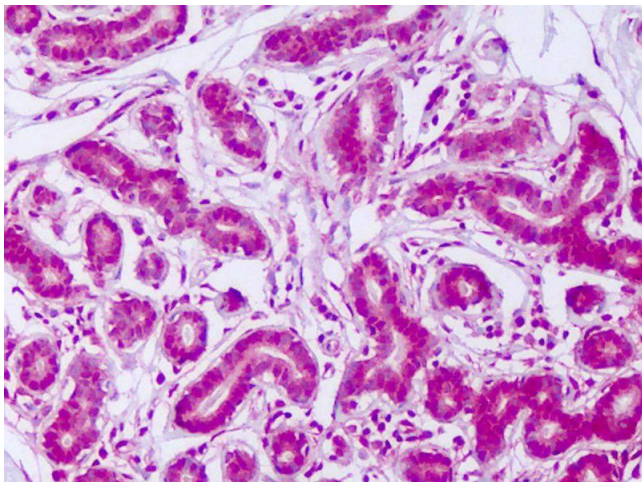


Image 2.



Immunohistochemistry

Image 3. Anti-MYBL2 antibody IHC of human breast. Immunohistochemistry of formalin-fixed, paraffin-embedded tissue after heat-induced antigen retrieval. Antibody dilution 5-10 ug/ml. This image was taken for the unconjugated form of this product. Other forms ...