

Datasheet for ABIN1495037  
**anti-PPP2CA antibody (N-Term)**



[Go to Product page](#)

2 Images

## Overview

Quantity:	100 µg
Target:	PPP2CA
Binding Specificity:	N-Term
Reactivity:	Human, Mouse, Rat
Host:	Rabbit
Clonality:	Polyclonal
Conjugate:	This PPP2CA antibody is un-conjugated
Application:	Western Blotting (WB), Immunohistochemistry (IHC), Immunohistochemistry (Paraffin-embedded Sections) (IHC (p)), Immunocytochemistry (ICC)

## Product Details

Immunogen:	Synthetic peptide corresponding to a sequence mapping near the N-terminal of human PP2A, identical to the related rat and mouse sequence.  Type of Immunogen: Synthetic peptide
Specificity:	Human, mouse, rat. No cross reactivity with other proteins.
Cross-Reactivity (Details):	No cross reactivity with other proteins.
Purification:	Immunoaffinity purified

## Target Details

Target:	PPP2CA
---------	--------

## Target Details

---

Alternative Name:	PP2Ac / PPP2CA ( <a href="#">PPP2CA Products</a> )
Background:	Name/Gene ID: PPP2CA Subfamily: PP2A Family: Protein Phosphatase  Synonyms: PPP2CA, PP2Ac, PP2Calpha, ppp2A1, Protein phosphatase 2A alpha, Replication protein C, PP2CA, RP-C, PP2A-alpha
Gene ID:	5515
UniProt:	<a href="#">P67775</a>
Pathways:	<a href="#">PI3K-Akt Signaling</a> , <a href="#">Mitotic G1-G1/S Phases</a> , <a href="#">Hepatitis C</a> , <a href="#">Toll-Like Receptors Cascades</a>

## Application Details

---

Application Notes:	Approved: ICC (0.5 - 1 µg/mL), IHC, IHC-P (1 - 2 µg/mL), WB (1 - 2 µg/mL)
Comment:	Target Species of Antibody: Human
Restrictions:	For Research Use only

## Handling

---

Format:	Liquid
Concentration:	Lot specific
Buffer:	5 mg BSA, 0.9 mg sodium chloride, 0.2 mg sodium phosphate, 0.05 mg Thimerosal, 0.05 mg sodium azide
Preservative:	Thimerosal (Merthiolate), Sodium azide
Precaution of Use:	This product contains Sodium azide and Thimerosal (Merthiolate): POISONOUS AND HAZARDOUS SUBSTANCES which should be handled by trained staff only.
Storage:	4 °C, -20 °C
Storage Comment:	Short term: 4°C Long term: -20°C.

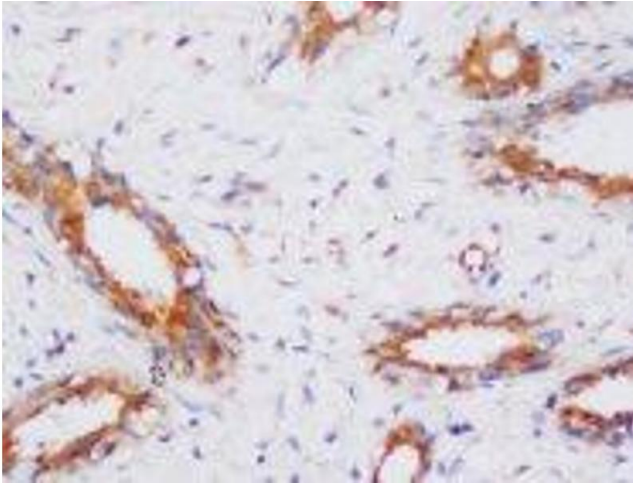


Image 1.

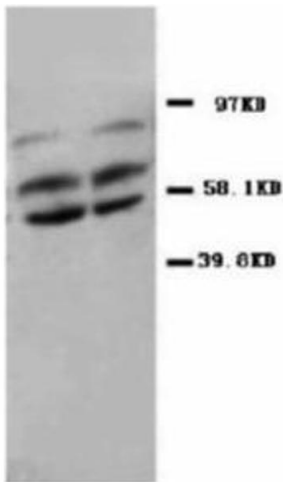


Image 2.