

Datasheet for ABIN1495047  
**anti-GAP43 antibody (N-Term)**



[Go to Product page](#)

2 Images

## Overview

Quantity:	100 µg
Target:	GAP43
Binding Specificity:	N-Term
Reactivity:	Human, Rat, Mouse
Host:	Rabbit
Clonality:	Polyclonal
Conjugate:	This GAP43 antibody is un-conjugated
Application:	Western Blotting (WB), Immunohistochemistry (IHC), Immunohistochemistry (Paraffin-embedded Sections) (IHC (p))

## Product Details

Immunogen:	Synthetic peptide corresponding to a sequence at the N-terminal of the human GAP-43, different to the related mouse and rat sequence by single amino acid.  Type of Immunogen: Synthetic peptide
Specificity:	Human, mouse, rat. No cross reactivity with other proteins.
Cross-Reactivity (Details):	No cross reactivity with other proteins.
Purification:	Immunoaffinity purified

## Target Details

Target:	GAP43
---------	-------

## Target Details

---

Alternative Name: GAP43 ([GAP43 Products](#))

---

Background: Name/Gene ID: GAP43  
Family: Neuromodulin

Synonyms: GAP43, Axonal membrane protein GAP-43, B-50, Growth associated protein 43, Growth-associated protein 43, Neural phosphoprotein B-50, Neuromodulin, PP46, GAP-43, Protein F1

---

Gene ID: 2596

---

UniProt: [P17677](#)

---

## Application Details

---

Application Notes: Approved: IHC, IHC-P, WB

Usage: IHC: To detect GAP-43 in formalin fixed and paraffin embedded tissues. Boiling the sections is required.

---

Comment: Target Species of Antibody: Human

---

Restrictions: For Research Use only

---

## Handling

---

Format: Liquid

---

Concentration: Lot specific

---

Buffer: 5 mg BSA, 0.9 mg sodium chloride, 0.2 mg sodium phosphate, 0.05 mg Thimerosal, 0.05 mg sodium azide

---

Preservative: Thimerosal (Merthiolate), Sodium azide

---

Precaution of Use: This product contains Sodium azide and Thimerosal (Merthiolate): POISONOUS AND HAZARDOUS SUBSTANCES which should be handled by trained staff only.

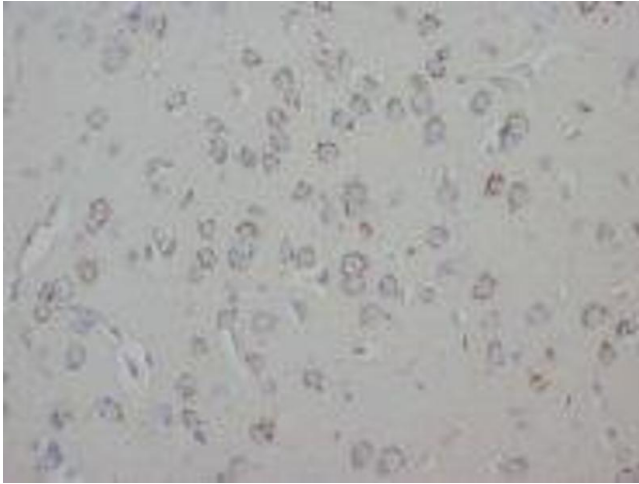
---

Storage: 4 °C, -20 °C

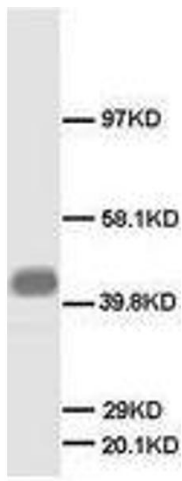
---

Storage Comment: Short term: 4°C  
Long term: -20°C.

---



**Image 1.**



**Image 2.**